



G-Ext[®]
Exterior Decorative Panels

www.g-ext.com.tr

EBC Panels
G-Uv+ Panels





Endless possibilities...

G-Ext® exterior decorative panels brings compelling aesthetic and nearly limitless design possibilities to next-generation architectural claddings. With its smooth, seamless and non-porous surface, G-Ext® decorative panels are easy to clean and it takes longer for to accumulate dirt and thus they are easy to maintain.

With durability, longevity and safety

G-Ext® panels are very durable and resistant to mechanical or physical stress such as bending, impact, cracking and scratching without losing its ability to be easily processed with sizing, drilling and engraving tools. In addition, G-Ext® is highly durable to environmental exposure, such as



Water Repellent



Easy To Clean



Dry Heat Resistance



Heat & Cold Resistance



Low Light Reflectivity



Chemical Resistance



Scratch & Abrasion Resistance



Impact Resistance



Ultra Color Intensity

GENTAS ENVIRONMENTAL DECLARATION

GENTAS OPERATIONAL MEASURES FOR IMPROVEMENT OF ENVIRONMENTAL PERFORMANCES

The production process of "GENTAS" laminates has been adapted to the environment thematic.

New and strict regulations had been adopted to ensure a continuous improvement of the environmental performances.

The purity of the air and of the water is being efficiently protected in the production department area.

All the gases from the impregnation and pressing machinery are absorbed and eliminated in a special steam boiler. This important process is controlled by our Technical Manager and supervised by government authorities.

The residues resulting from the production are efficiently treated in the factory area.

As another part of GENTAS care for the environment, all the raw material used for the production of the laminates are purchased only from suppliers

sunlight, heat, moisture and other atmospheric chemicals which ensures structural integrity and color stability.

When required, G-Ext® panels can be produced with enhanced fire retardant and fire resistant capabilities. When encountered with fire, the material does not enflame easily and no melting, burning droplets, explosion, or toxic gas emissions happens during fire exposure.

Without compromise on health and environment. None of our surface materials contain highly toxic substances such as asbestos and chlorine and all production is highly regulated and constantly audited in order to maintain accordance to most current European regulations on emissions.

who are in environmental performances needed. possession of ISO 9002 and Kraft papers only from FSC certificated producers. Our Kraft paper contains an important percentage of recycled paper (around 20%) and our decorative papers do not contain any of the following materials:

- Cadmium
- Chrome Hexavalent
- Lead
- Mercury
- Polybrominated Biphenils (PBB)
- Polybrominated Diphenylether (PBDE)

No efforts will be spared by GENTAS to continue the implementation of all the necessary actions to achieve the best

We are a Fsc certified laminate producer.

We added respect to the nature to the quality of our products. FSC had certified that our laminate products has been manufactured from the sustainable managed resources and submitted for your use.



EBC PANELS

G-Ext EBC exterior decorative panels are produced by pressing impregnated kraft papers together with decorative papers which are EBC (Electron Beam Curing) treated.

G-Ext EBC panels are suitable for horizontal and vertical usage

WOOD / NATURAL STONE & CONCRETE



25687



25685

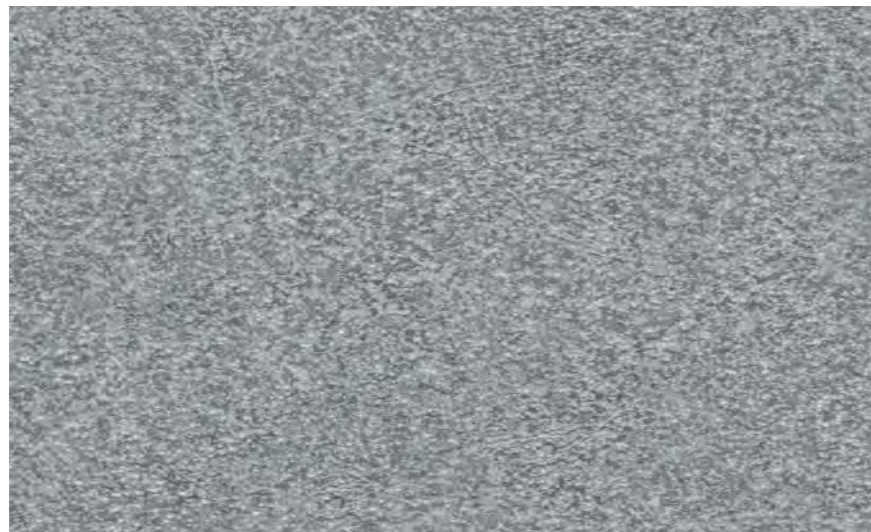


25686

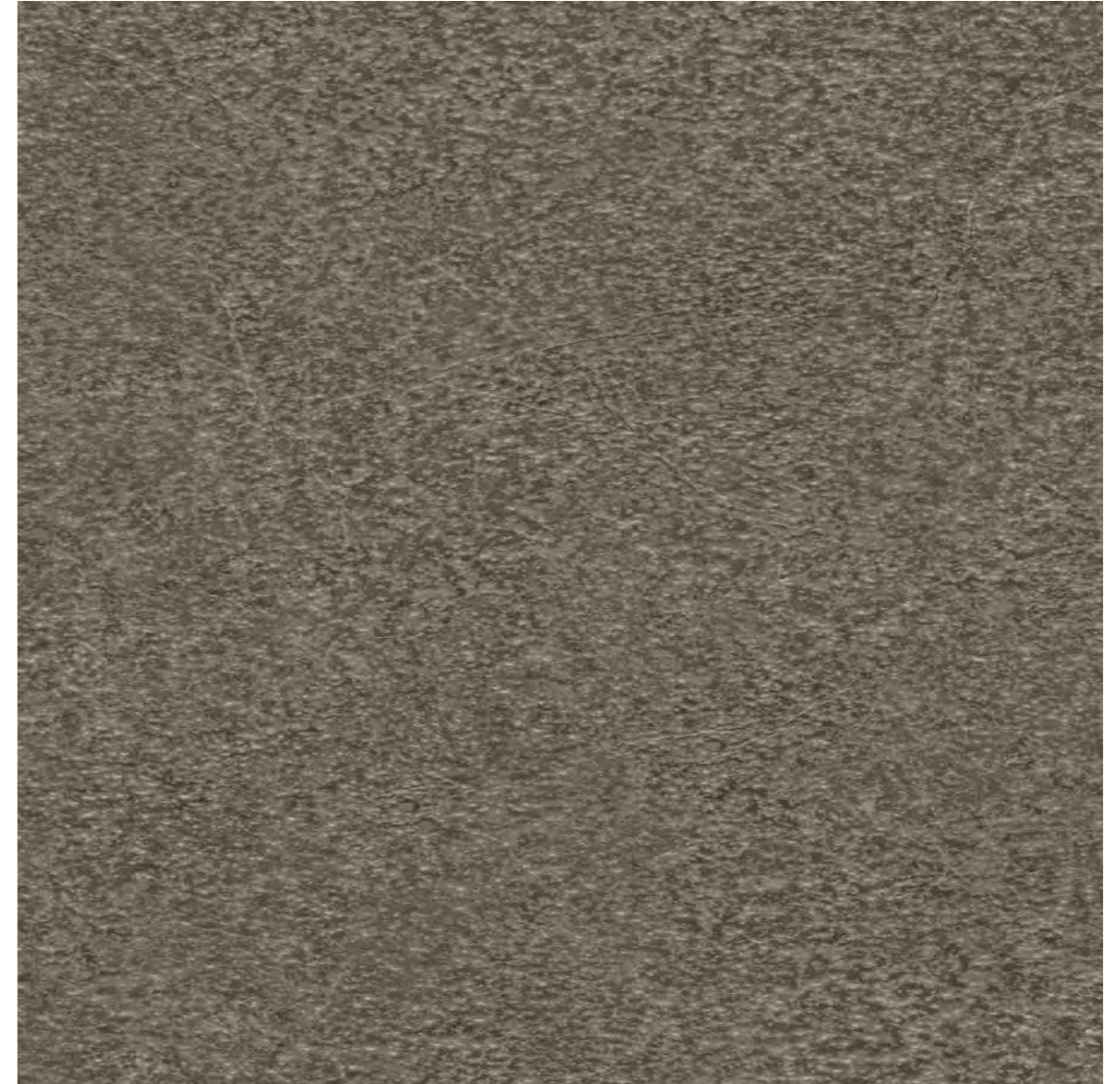
Size: 1300x2800mm / 1300x3050mm



25689



25690



25683



24659



24658

Size: 1300x2800mm / 1300x3050mm



24531

Size: 1300x2800mm / 1300x3050mm



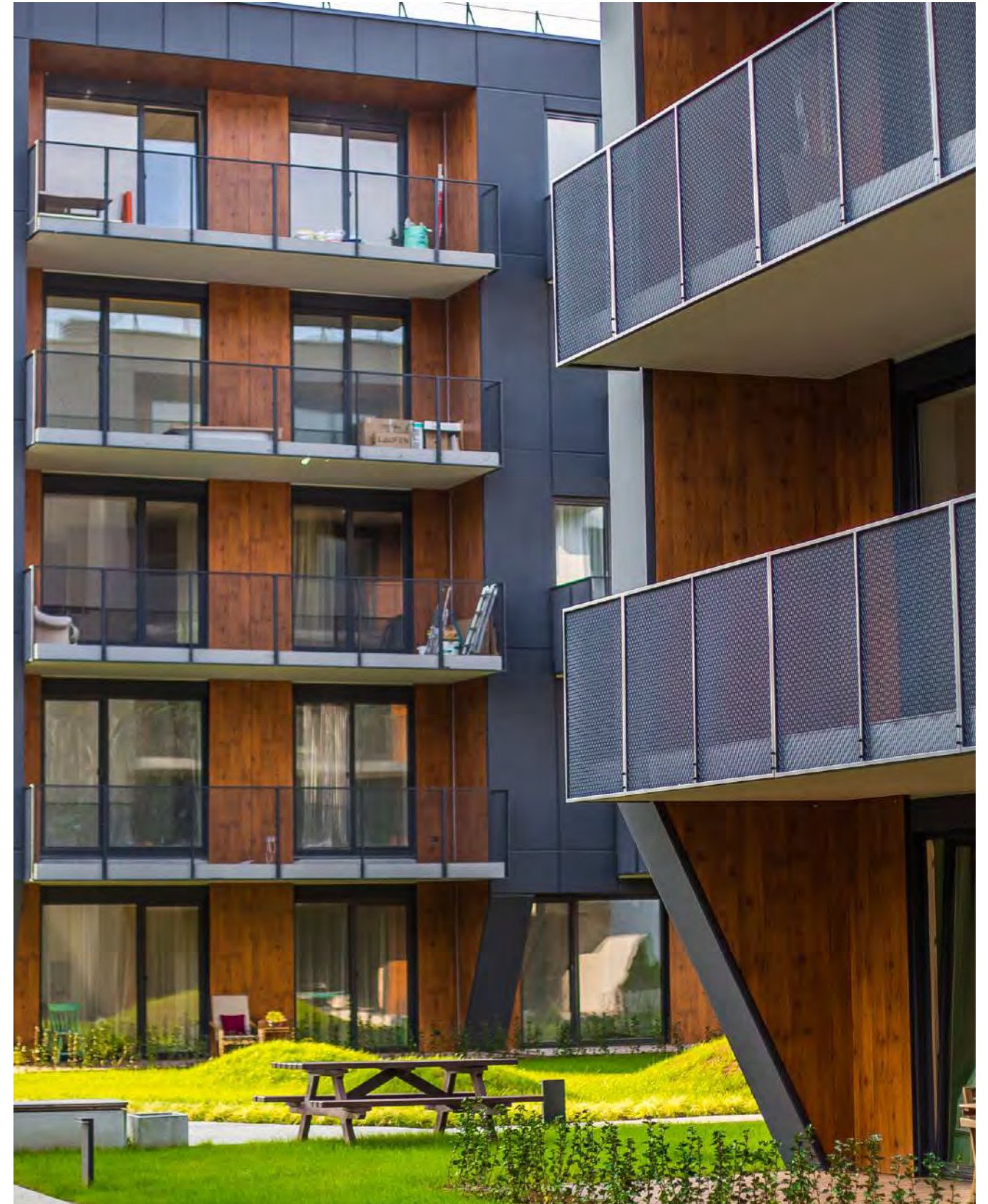
24533



24535



24534





24530



24532



24390



24391



24392



25629



25630



25678



24389



25628



24290



24292

Size: 1300x2800mm / 1300x3050mm



24279



24248

Size: 1300x2800mm / 1300x3050mm



24241

Size: 1300x2800mm / 1300x3050mm



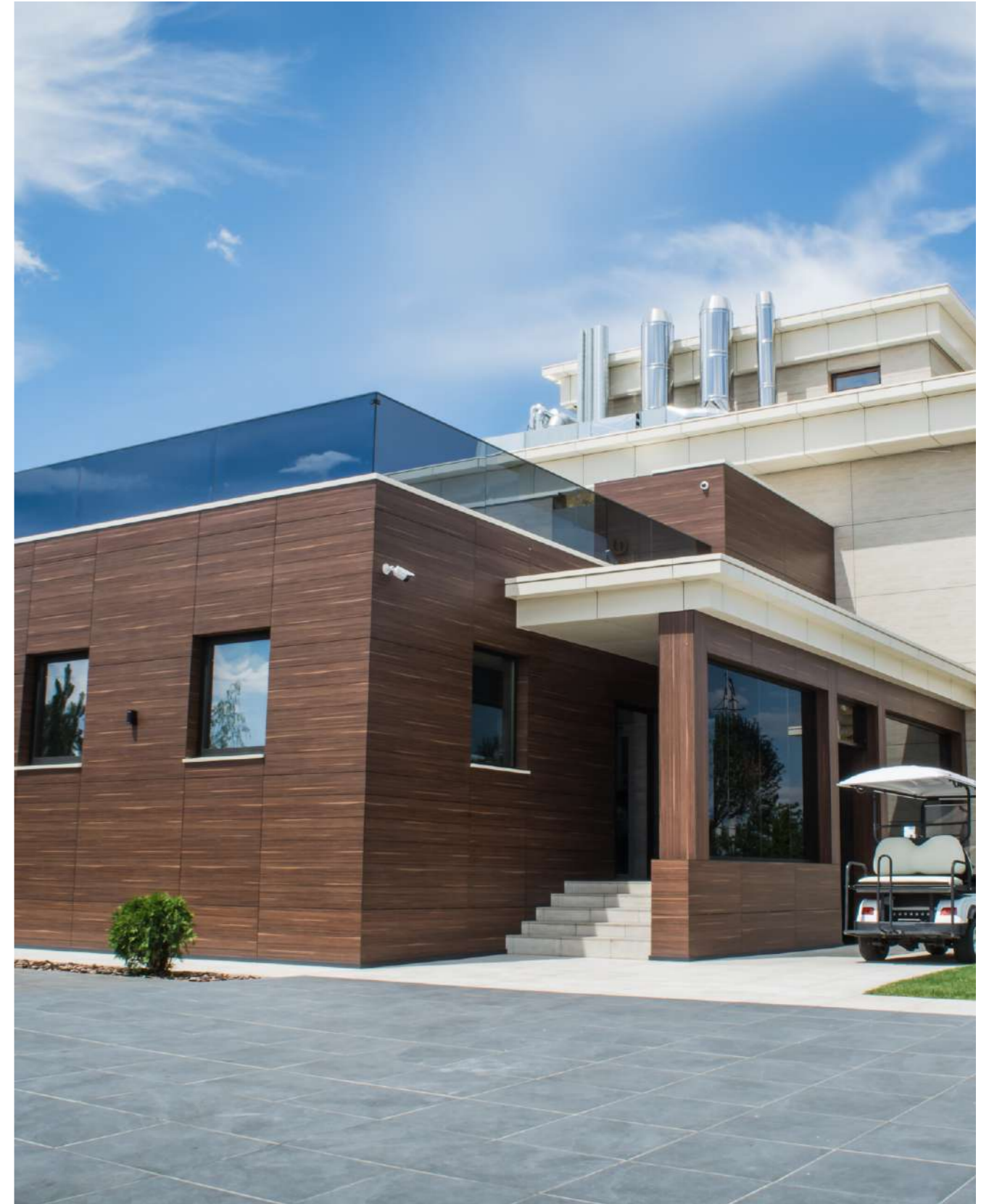
24657



24399



24525

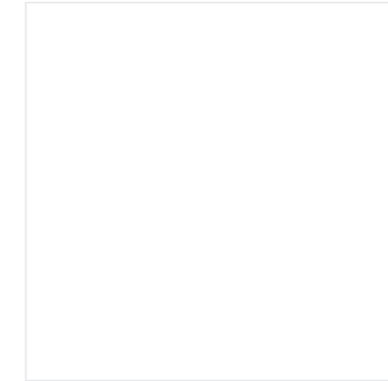
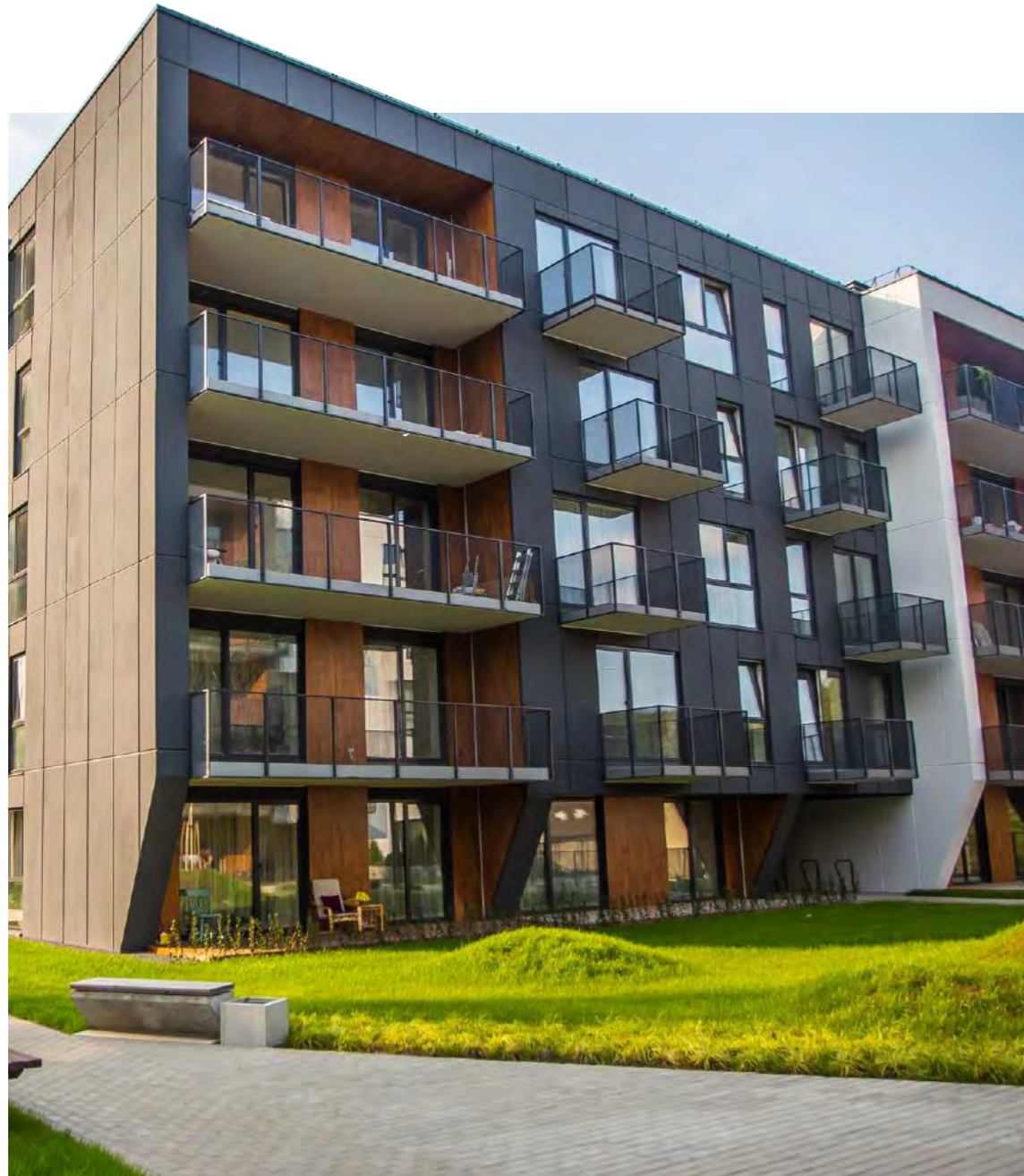


G-Uv+ PANELS

G-Ext UV+ exterior decorative compact panels produced with HPL production technique. The surface layer of the G-Ext UV+ compact panels has been specially treating and extra reinforcing.

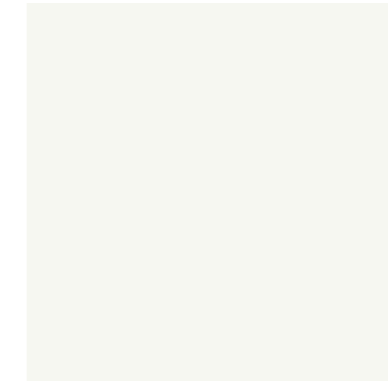
G-Ext UV+ panels are suitable for vertical usage

PLAIN COLOR
WOOD
NATURAL STONE & CONCRETE

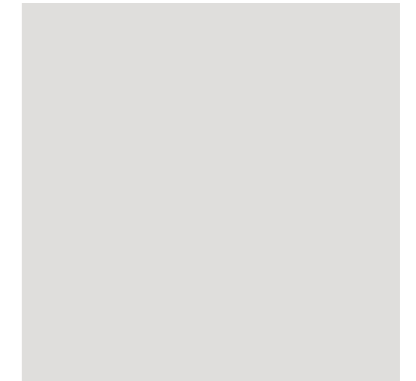


3097

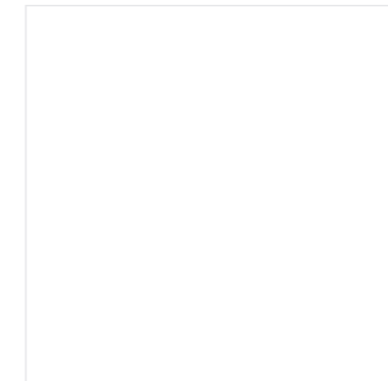
Available as
1860x4200 mm



3096

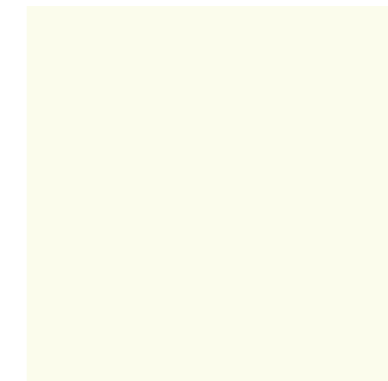


3150

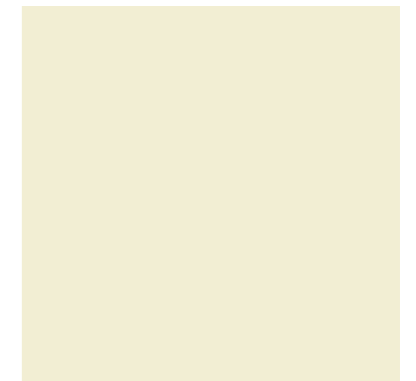


3103

Available as
1860x4200 mm



3195



3106

Available as
1860x4200 mm



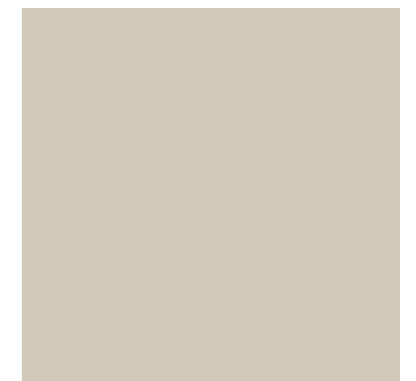
3151

Available as
1860x4200 mm



3105

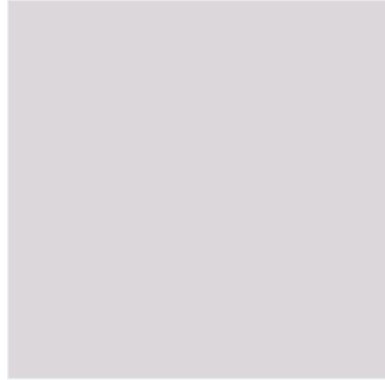
Available as
1860x4200 mm



3107

Available as
1860x4200 mm

Size: 1300x2800mm / 1300x3050mm



3153

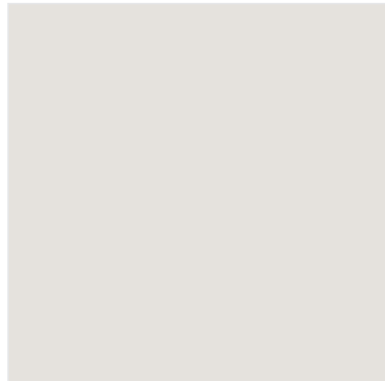
Available as
1860x4200 mm



3159



3239



3240

Available as
1860x4200 mm



3160



3190

Available as
1860x4200 mm



3156

Available as
1860x4200 mm

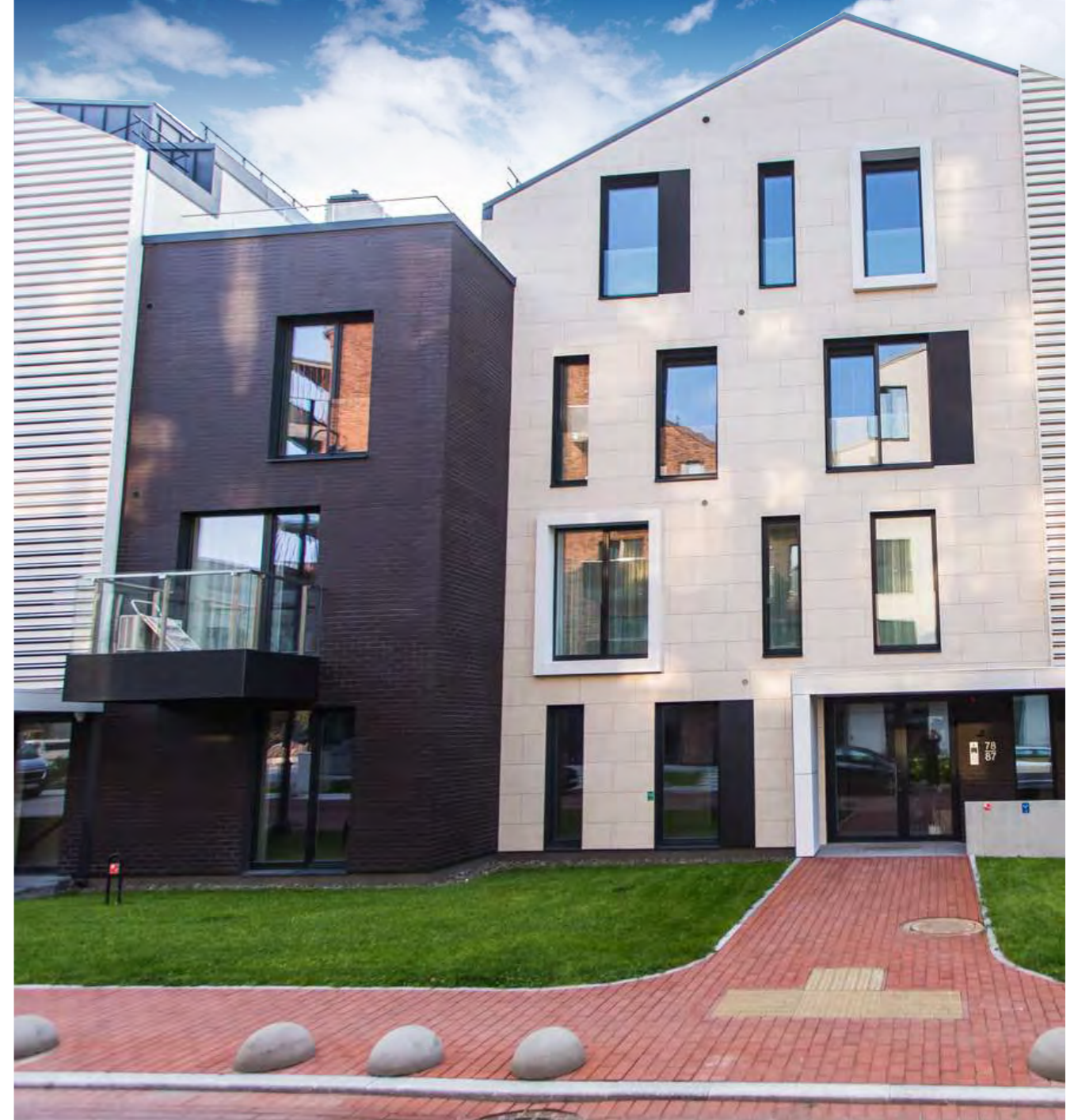


3155

Available as
1860x4200 mm



3168





3163



3276



3251



3104

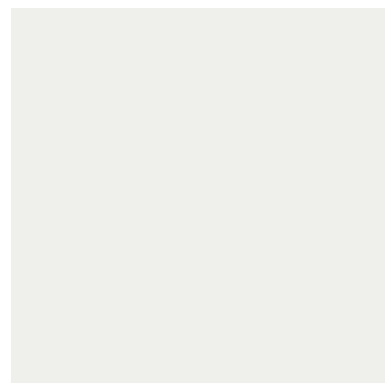
Available as
1860x4200 mm



3148



3252



3296



3167



3253

Available as
1860x4200 mm

Size: 1300x2800mm / 1300x3050mm



3286



3285



3284



3281



3282



3246



3262



3137



3131

Size: 1300x2800mm / 1300x3050mm



3297



3299



3291



3292



3238



3140



3300



3289



3127

Size: 1300x2800mm / 1300x3050mm



3126



3158



3116



3274



3245



3278



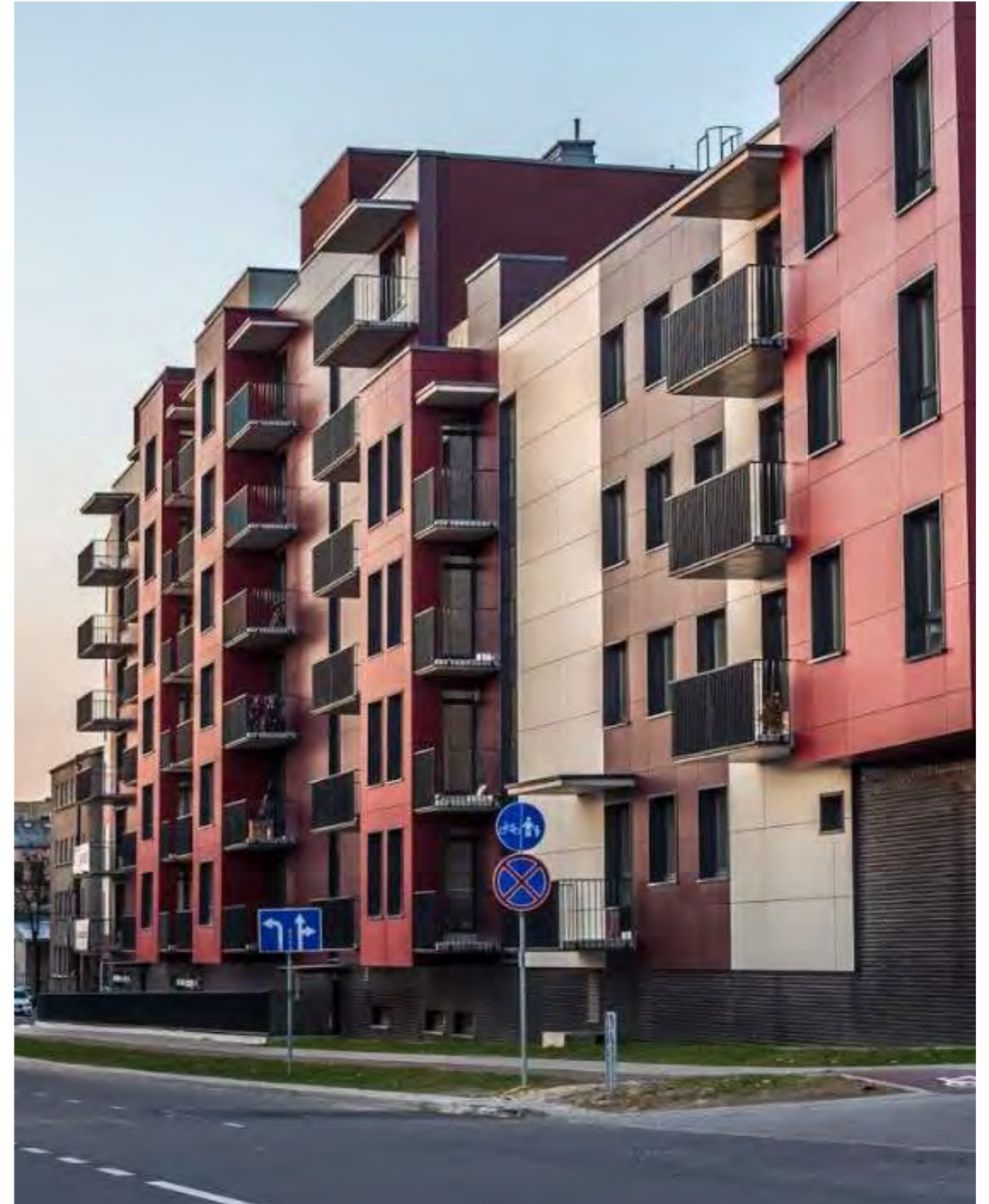
3164



3242



3294





3145



3248



3254



3288



3279



3272



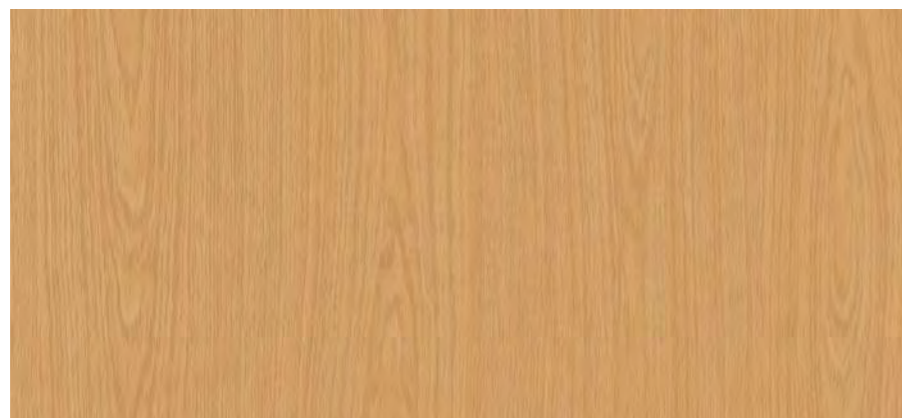
3169



3307

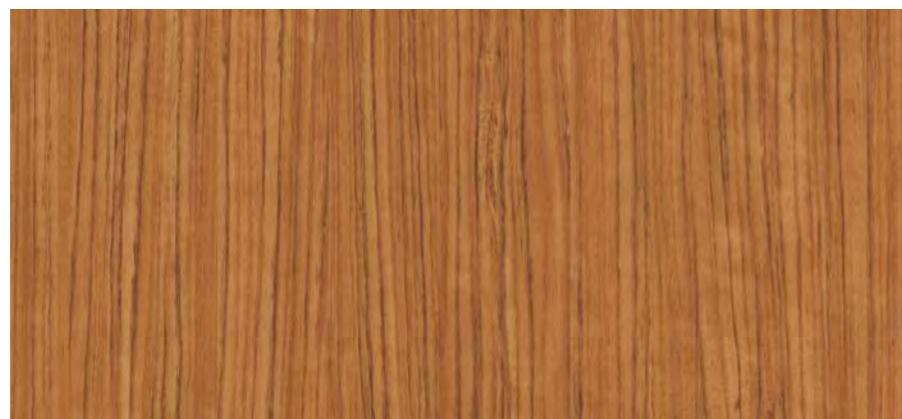
Size: 1300x2800mm / 1300x3050mm





4220

Available as 1860x4200 mm



4234

Available as 1860x4200 mm





4251

Available as 1860x4200 mm



4252



4241

Size: 1300x2800mm / 1300x3050mm



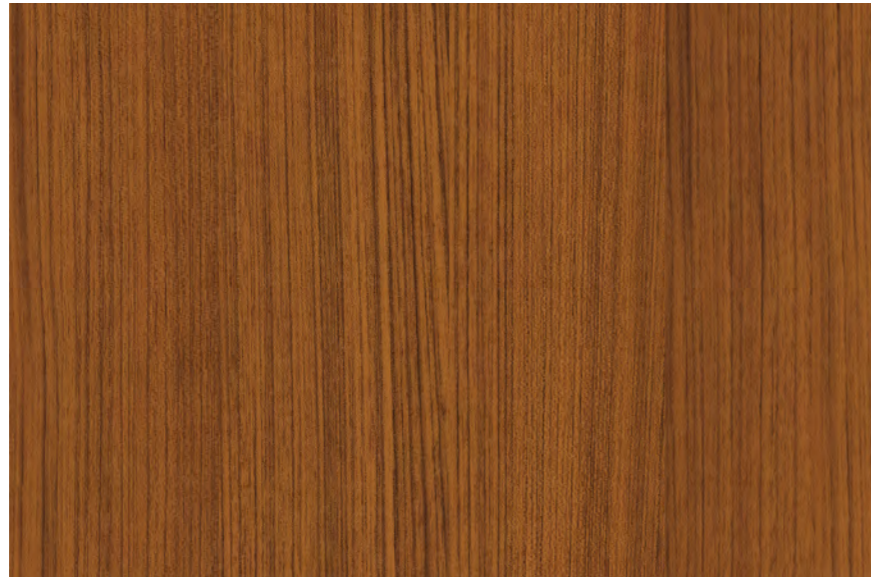
4248

Size: 1300x2800mm / 1300x3050mm



4572

Available as 1860x4200 mm



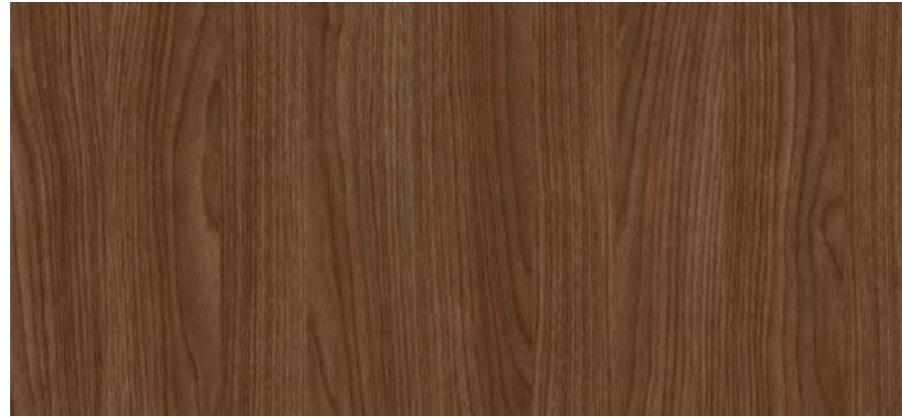
4279



4257



4656



4271



4273

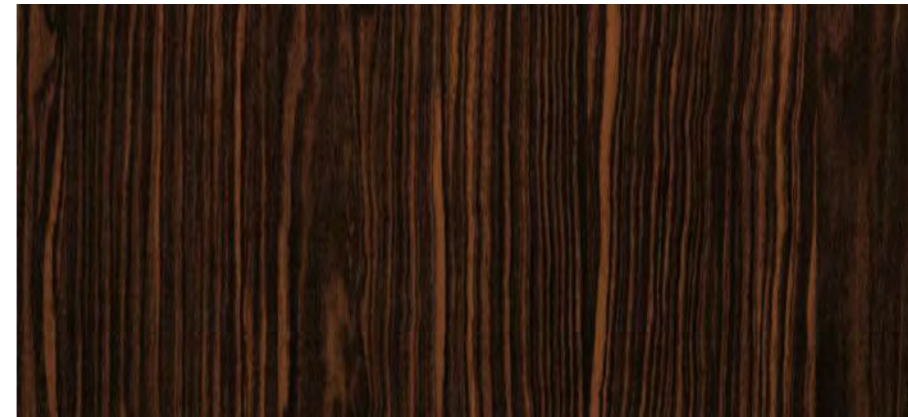


4274

Available as 1860x4200 mm



4389



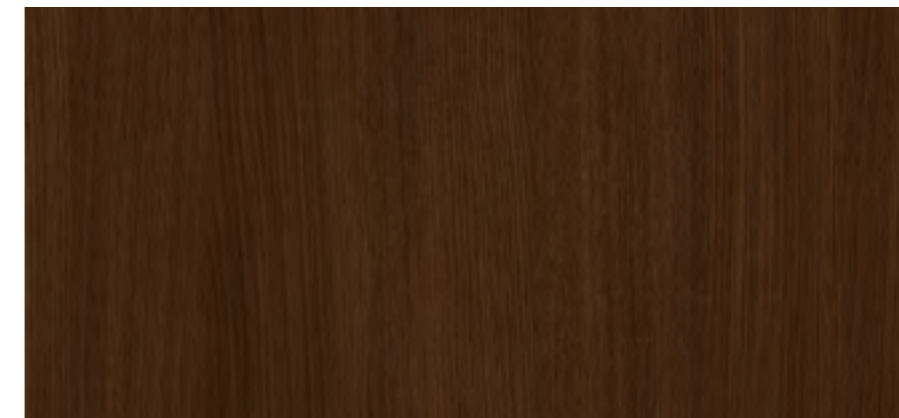
4290

Available as 1860x4200 mm

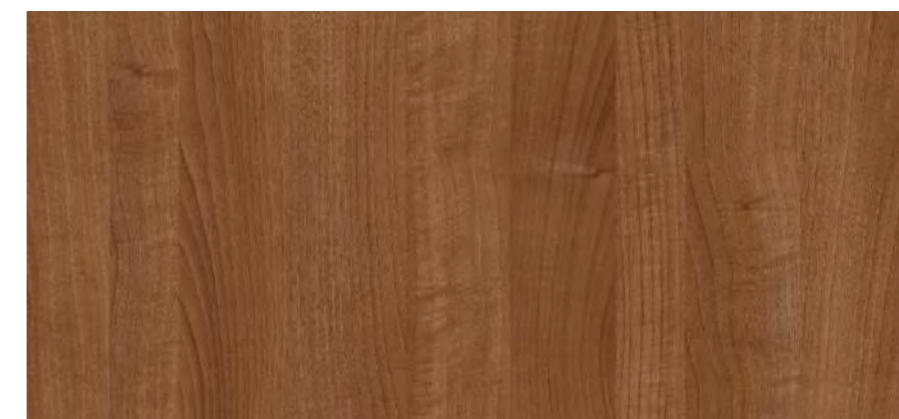


4292

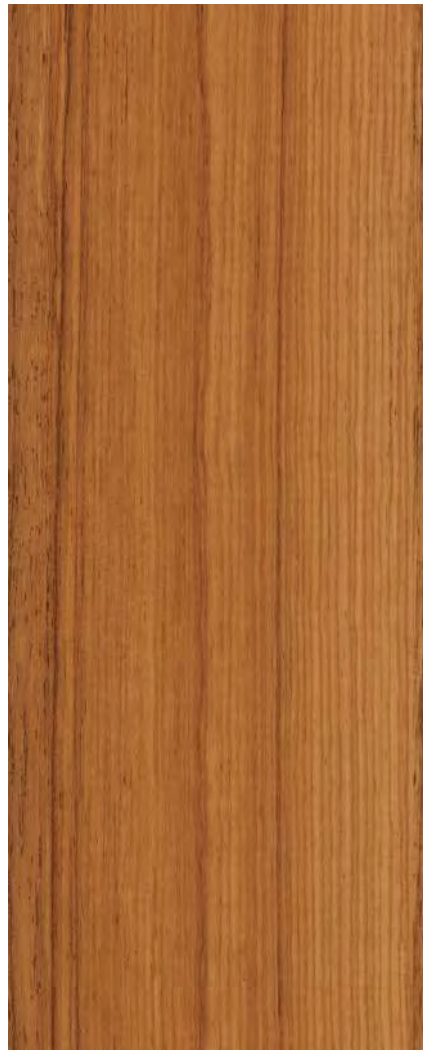
Available as 1860x4200 mm



4378



4479



4395

Available as
1860x4200 mm



4394

Available as
1860x4200 mm



4530

Size: 1300x2800mm / 1300x3050mm



4390



4391



4392

Size: 1300x2800mm / 1300x3050mm



4509



4510



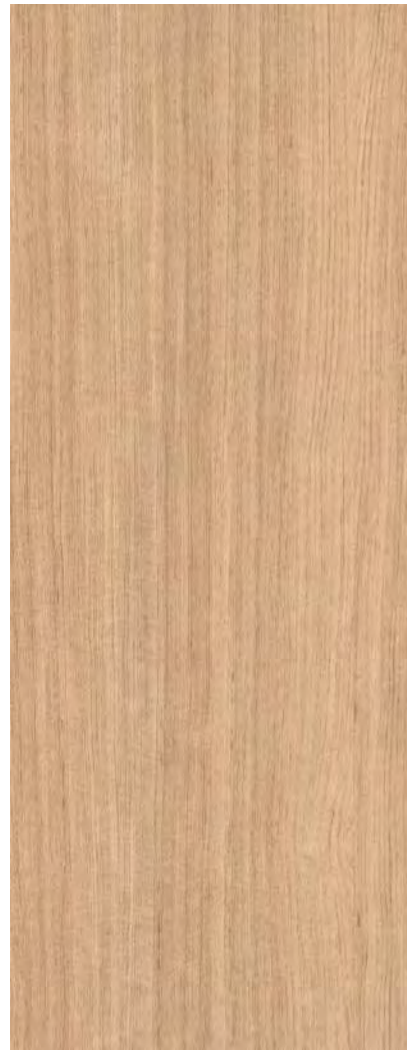
4550



4551



4552



4597



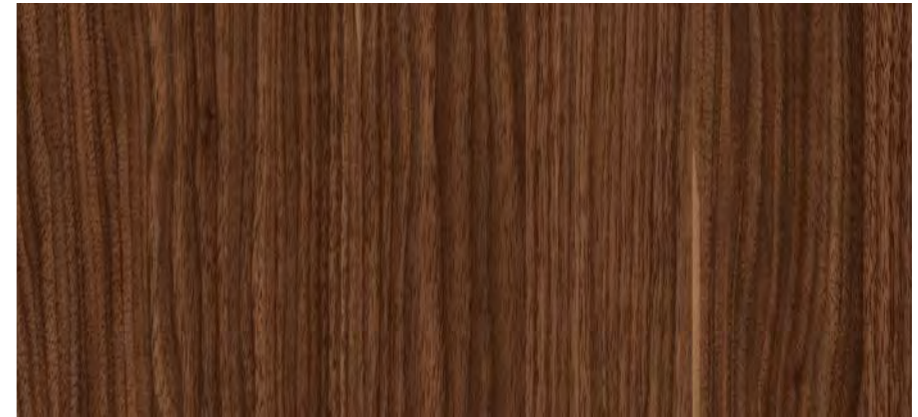
4598

Available as
1860x4200 mm



4484

Size: 1300x2800mm / 1300x3050mm



4399

Available as 1860x4200 mm



4485

Size: 1300x2800mm / 1300x3050mm



4631



4570



4666

Available as
1860x4200 mm

Size: 1300x2800mm / 1300x3050mm



4523

Available as 1860x4200 mm



4565

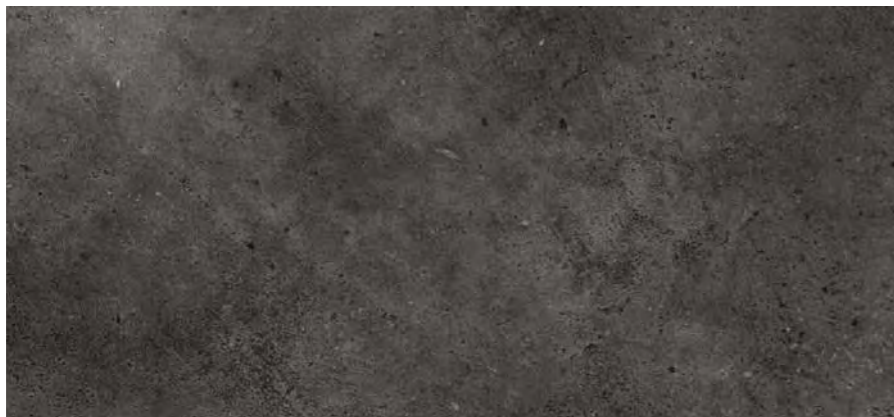
Available as 1860x4200 mm



5649



4628



5672



4626



4627



4655



4584



4525

Available as 1860x4200 mm

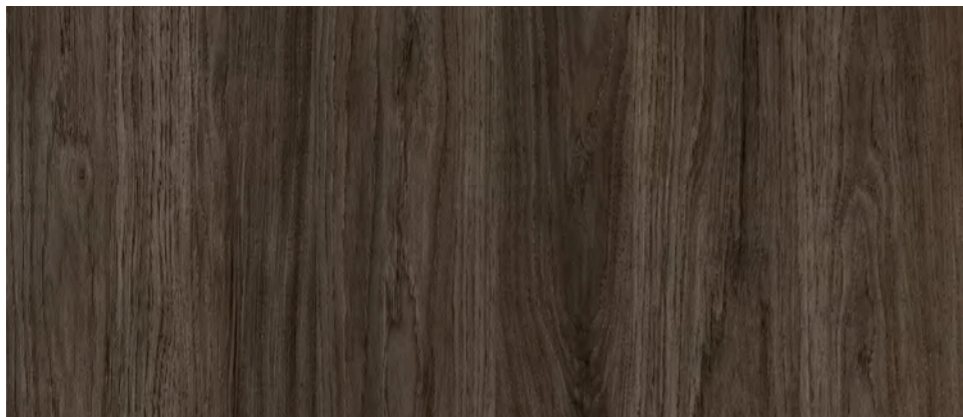


4657



4614

Available as 1860x4200 mm



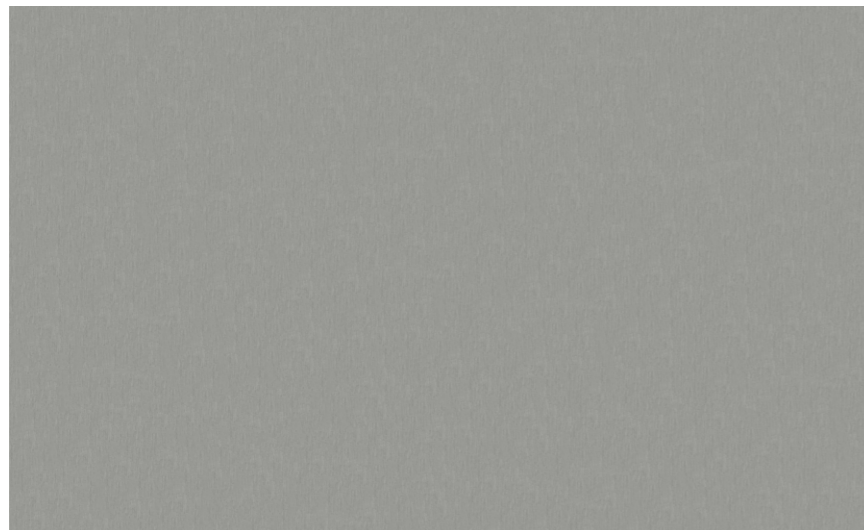
4658



5678



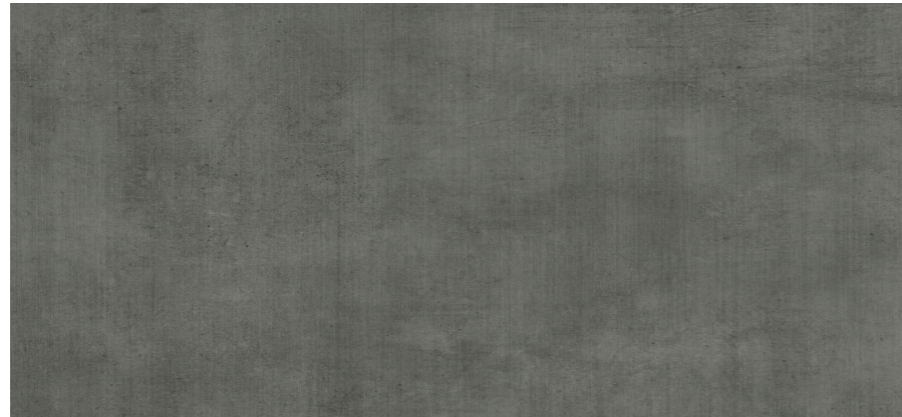
5576



5544



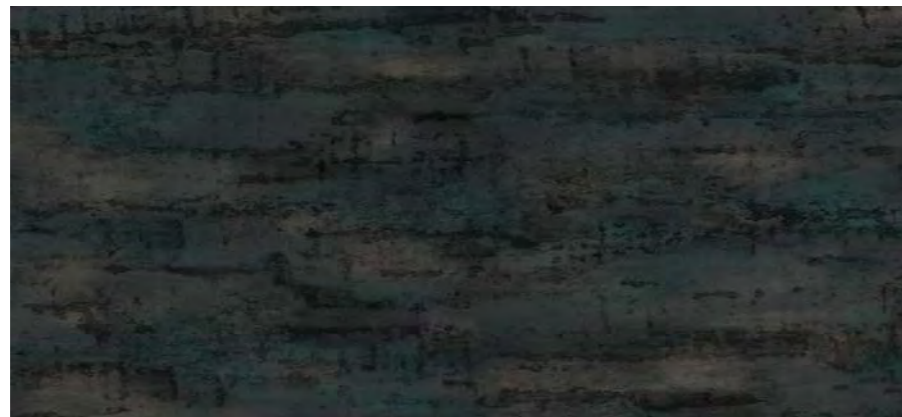
5628



5677



5646



5686





5635



5662



5634

Size: 1300x2800mm / 1300x3050mm



4583

Available as
1860x4200 mm



4662



4632

Size: 1300x2800mm / 1300x3050mm



5638





5419



5742

Size: 1300x2800mm / 1300x3050mm



5663

Size: 1300x2800mm / 1300x3050mm



5702



5687



5629



5630

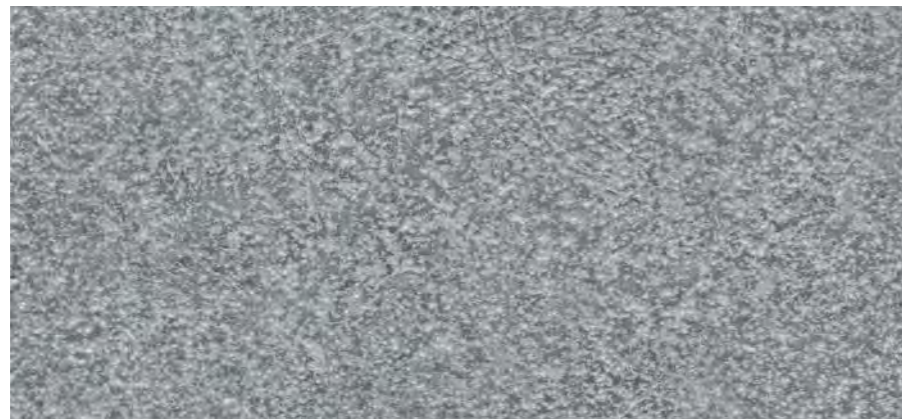
Size: 1300x2800mm / 1300x3050mm



5689



5644



5690



5450



5440



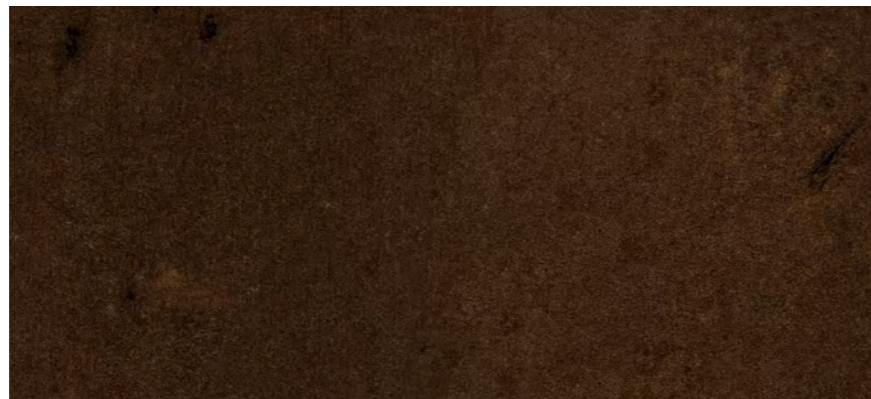
5643



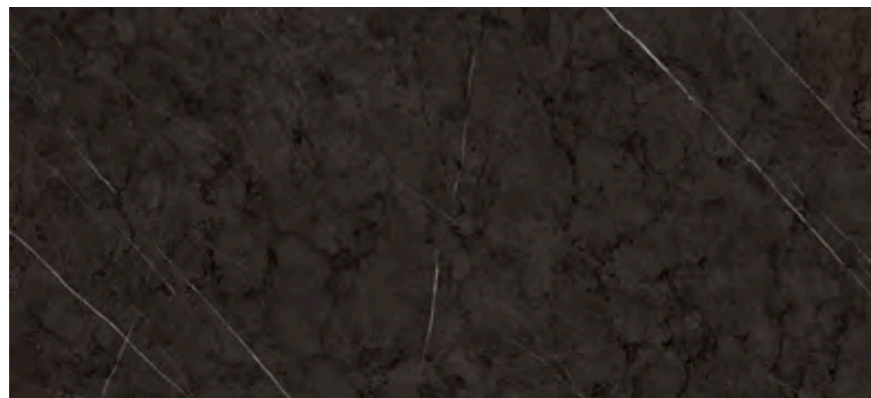
5648



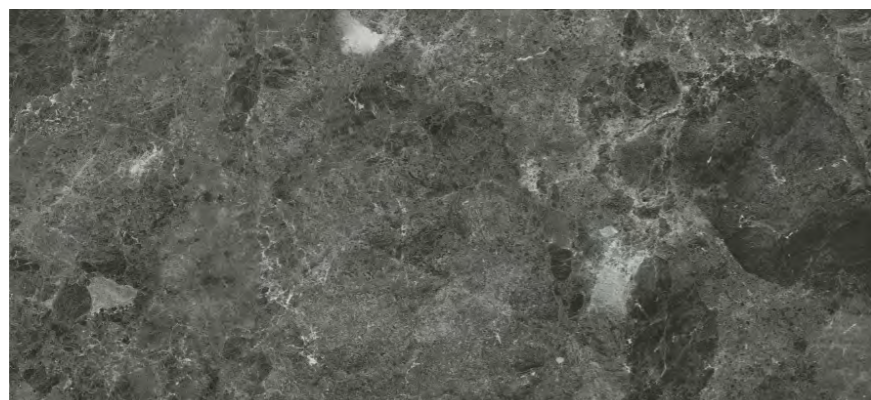
5655



5663



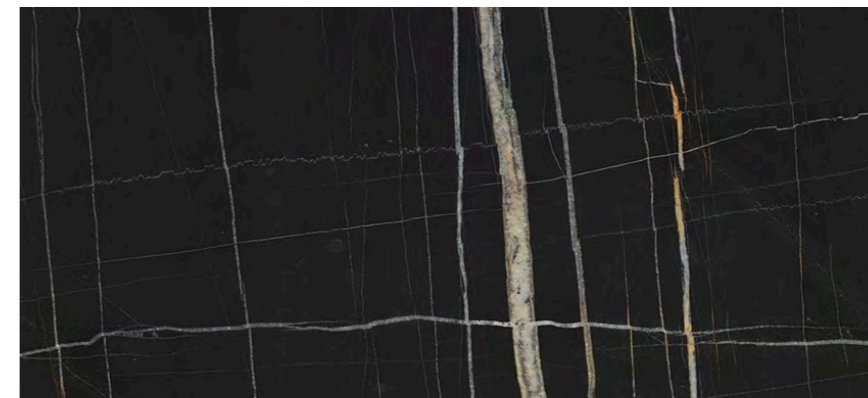
5666



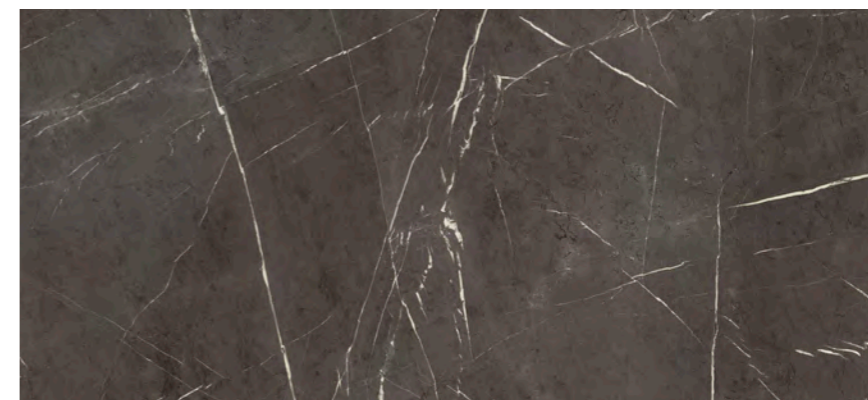
5700



5730



5741



5743



| 1300x2800mm / 1300x3050mm | | | | |
|---------------------------|-------|--------|---------------|------|
| | EXT | ALPINE | GRANITE STONE | PAGE |
| EBC | 24241 | X | | 19 |
| | 24248 | X | | 18 |
| | 24279 | X | | 18 |
| | 24290 | X | | 17 |
| | 24292 | X | | 17 |
| | 24389 | X | | 15 |
| | 24390 | X | | 13 |
| | 24391 | X | | 13 |
| | 24392 | X | | 13 |
| | 24399 | X | | 20 |
| | 24525 | X | | 20 |

| 1300x2800mm / 1300x3050mm | | | | | |
|---------------------------|-------|--------|---------------|------|----|
| | EXT | ALPINE | GRANITE STONE | PAGE | |
| EBC | 24530 | X | | 12 | |
| | 24531 | X | | 9 | |
| | 24532 | X | | 12 | |
| | 24533 | X | | 10 | |
| | 24534 | X | | 10 | |
| | 24535 | X | | 10 | |
| | 24657 | X | | 19 | |
| | 24658 | X | | 8 | |
| | 24659 | X | | 8 | |
| | 25628 | | X | | 15 |
| | 25629 | | X | | 14 |
| | 25630 | | X | | 14 |

| 1300x2800mm / 1300x3050mm | | | | | |
|---------------------------|-------|--------|---------------|------|---|
| | EXT | ALPINE | GRANITE STONE | PAGE | |
| EBC | 25678 | | X | 14 | |
| | 25683 | | X | 7 | |
| | 25685 | X | | 5 | |
| | 25686 | X | | 5 | |
| | 25687 | X | | 5 | |
| | 25689 | | | X | 6 |
| | 25690 | | | X | 6 |

| 1300x2800mm / 1300x3050mm | | | |
|---------------------------|--------------|------|----|
| | VELUR - ESSE | PAGE | |
| G-Uv + | 3096 | X | 23 |
| | 3097 | X | 23 |
| | 3103 | X | 23 |
| | 3104 | X | 26 |
| | 3105 | X | 23 |
| | 3106 | X | 23 |
| | 3107 | X | 23 |
| | 3116 | X | 30 |
| | 3126 | X | 30 |
| | 3127 | X | 29 |
| | 3131 | X | 27 |
| | 3137 | X | 27 |
| | 3140 | X | 29 |
| | 3145 | X | 32 |
| | 3148 | X | 26 |
| | 3150 | X | 23 |
| | 3151 | X | 23 |
| | 3153 | X | 24 |
| | 3155 | X | 24 |
| | 3156 | X | 24 |
| | 3158 | X | 30 |
| | 3159 | X | 24 |
| | 3163 | X | 26 |
| | 3164 | X | 30 |
| | 3167 | X | 26 |
| | 3168 | X | 24 |
| | 3169 | X | 32 |
| | 3190 | X | 24 |
| | 3195 | X | 23 |
| | 3238 | X | 29 |
| | 3239 | X | 24 |
| | 3240 | X | 24 |
| 3242 | X | 30 | |
| 3245 | X | 30 | |
| 3246 | X | 27 | |
| 3248 | X | 32 | |
| 3251 | X | 26 | |
| 3252 | X | 26 | |
| 3254 | X | 32 | |
| 3253 | X | 26 | |
| 3260 | X | 24 | |
| 3262 | X | 27 | |
| 3274 | X | 30 | |
| 3272 | X | 32 | |
| 3276 | X | 26 | |

SURFACE DIMENSION CHART
NUMERICAL LISTING

| 1300x2800mm / 1300x3050mm | | |
|---------------------------|--------------|------|
| | VELUR - ESSE | PAGE |
| G-Uv + | 3278 | X 30 |
| | 3279 | X 32 |
| | 3281 | X 27 |
| | 3282 | X 27 |
| | 3284 | X 27 |
| | 3285 | X 27 |
| | 3286 | X 27 |
| | 3288 | X 32 |
| | 3289 | X 29 |
| | 3291 | X 29 |
| | 3292 | X 29 |
| | 3294 | X 30 |
| | 3296 | X 26 |
| | 3297 | X 29 |
| | 3299 | X 29 |
| | 3300 | X 29 |
| | 3307 | X 32 |
| | 4220 | X 34 |
| | 4234 | X 34 |
| | 4241 | X 38 |
| | 4248 | X 39 |
| | 4251 | X 36 |
| | 4252 | X 37 |
| | 4257 | X 40 |
| | 4271 | X 42 |
| | 4273 | X 42 |
| | 4274 | X 42 |
| | 4279 | X 40 |
| | 4290 | X 43 |
| | 4292 | X 43 |
| | 4378 | X 45 |
| | 4389 | X 43 |
| | 4390 | X 47 |
| | 4391 | X 47 |
| | 4392 | X 47 |
| | 4394 | X 46 |
| | 4395 | X 46 |
| | 4399 | X 51 |
| | 4479 | X 45 |
| | 4484 | X 50 |
| | 4485 | X 51 |
| | 4509 | X 66 |
| | 4510 | X 48 |
| | 4518 | X 49 |
| | 4523 | X 55 |
| | 4525 | X 59 |
| | 4530 | X 46 |
| | 4550 | X 49 |
| | 4551 | X 49 |
| | 4552 | X 49 |
| | 4565 | X 55 |
| | 4570 | X 53 |
| | 4572 | X 39 |

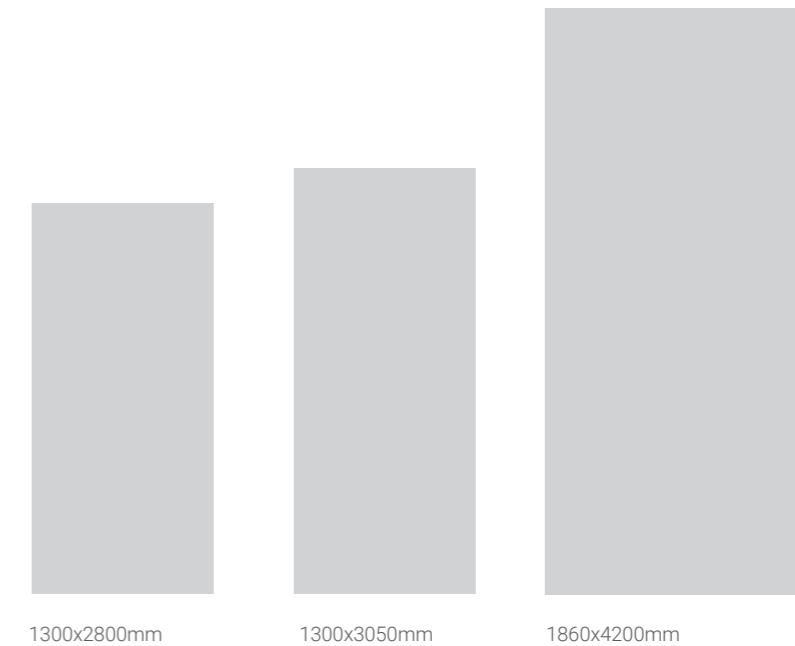
| 1300x2800mm / 1300x3050mm | | |
|---------------------------|--------------|------|
| | VELUR - ESSE | PAGE |
| G-Uv + | 4583 | X 65 |
| | 4584 | X 58 |
| | 4597 | X 50 |
| | 4598 | X 50 |
| | 4614 | X 59 |
| | 4626 | X 57 |
| | 4627 | X 57 |
| | 4628 | X 56 |
| | 4631 | X 53 |
| | 4632 | X 65 |
| | 4655 | X 58 |
| | 4656 | X 41 |
| | 4657 | X 58 |
| | 4658 | X 58 |
| | 4662 | X 65 |
| | 4666 | X 53 |
| | 5440 | X 76 |
| | 5419 | X 68 |
| | 5450 | X 75 |
| | 5544 | X 60 |
| | 5576 | X 60 |
| | 5628 | X 61 |
| | 5629 | X 73 |
| | 5630 | X 73 |
| | 5634 | X 64 |
| | 5635 | X 64 |
| | 5638 | X 66 |
| | 5643 | X 76 |
| | 5644 | X 74 |
| | 5646 | X 62 |
| | 5648 | X 77 |
| | 5649 | X 56 |
| | 5655 | X 77 |
| | 5662 | X 64 |
| | 5663 | X 78 |
| | 5666 | X 78 |
| | 5672 | X 56 |
| | 5677 | X 62 |
| | 5678 | X 59 |
| | 5686 | X 62 |
| | 5687 | X 73 |
| | 5689 | X 74 |
| | 5690 | X 74 |
| | 5700 | X 78 |
| | 5702 | X 71 |
| | 5730 | X 79 |
| | 5741 | X 79 |
| | 5742 | X 68 |
| | 5743 | X 79 |

SURFACE DIMENSION CHART
NUMERICAL LISTING

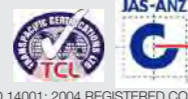
| 1860x4200mm | | |
|-------------|-------|------|
| | VELUR | PAGE |
| G-Uv + | 3097 | X 23 |
| | 3103 | X 23 |
| | 3104 | X 26 |
| | 3105 | X 23 |
| | 3106 | X 23 |
| | 3107 | X 23 |
| | 3151 | X 23 |
| | 3153 | X 24 |
| | 3155 | X 24 |
| | 3156 | X 24 |
| | 3190 | X 24 |

| 1860x4200mm | | |
|-------------|-------|------|
| | VELUR | PAGE |
| G-Uv + | 4395 | X 46 |
| | 4399 | X 51 |
| | 4523 | X 55 |
| | 4525 | X 59 |
| | 4565 | X 55 |
| | 4572 | X 39 |
| | 4583 | X 65 |
| | 4598 | X 50 |
| | 4614 | X 59 |
| | 5666 | X 78 |
| | 5741 | X 79 |
| | 5743 | X 79 |

| 1860x4200mm | | |
|-------------|-------|------|
| | VELUR | PAGE |
| G-Uv + | 3240 | X 24 |
| | 3253 | X 26 |
| | 4220 | X 34 |
| | 4234 | X 34 |
| | 4251 | X 36 |
| | 4274 | X 42 |
| | 4279 | X 40 |
| | 4290 | X 43 |
| | 4292 | X 43 |
| | 4394 | X 46 |



Our Certificates



ISO 14001:2004 REGISTERED COMPANY
CERT. NO.: E2077



(Uluslararası Laminat Üreticileri Birliği Üyesidir.)



EN-438 CE

www.g-ext.com.tr



G-Ext[®]
Exterior Decorative Panels

GENTAS
a touch to life

Gentaş Dekoratif Yüzeyler
Sanayi ve Ticaret A.Ş.

Dolancı Caddesi No:21 06160
Altındağ ANKARA / TÜRKİYE

T: +90 312 353 02 06 (pbx)
F: +90 312 348 78 67

www.gentas.com.tr
info@gentas.com.tr