



 **EQUITONE**  
by etex





# EQUITONE fiber cement facade panels

Over a century ago, Ludwig Hatschek revolutionized construction with the invention of fiber cement—a material formed by blending mineral components, water, air, and heat through a specialized filtration process. Since 1905, Etex, the global manufacturer behind EQUITONE, has been a leader in fiber cement innovation, continuously refining and expanding its possibilities.

Today, EQUITONE represents the pinnacle of this evolution, offering a range of high-density facade materials that seamlessly blend durability, versatility, and aesthetic appeal. Crafted using the Hatschek production process, each panel showcases a distinctive fiber cement texture, with most materials through-colored to deliver a raw, unpolished character that enhances modern architectural design.

Designed for use in a sophisticated rainscreen system, EQUITONE panels have exceptional impact resistance, long-lasting weather protection, minimal maintenance and 50+ years of longevity. Their strength and adaptability allow architects to push boundaries, integrating EQUITONE into bold facade concepts, striking interior elements, custom furniture, and beyond.

Advanced digital printing and precision fabrication techniques unlock endless design possibilities. From intricate perforations created with waterjet or CNC machines to engraving, digital printing, and precise cuts, EQUITONE empowers architects to transform vision into reality without compromising on performance. The ability to replicate any image, pattern, or texture with no repeating motifs ensures unparalleled creative freedom.

With over 120 years of expertise, we provide architects with the tools, resources, and expert guidance needed to simplify the façade selection process, allowing them to focus on what matters most: bringing their designs to life.









# Rainscreen facades

EQUITONE high-density fiber cement panels are designed to be used as part of a sophisticated ventilated rainscreen system. Per the Rainscreen Association in North America, a rainscreen is an assembly applied to an exterior wall which consists of, at minimum, an outer layer, an inner layer, and a cavity between them sufficient for the passive removal of liquid water and water vapor. What makes a rainscreen ventilated is allowance for air openings at the top and bottom of the rainscreen system.

The panels shield the backup wall from direct rain. However, depending on the nature of the joints between panels some water penetration may occur. The cavity can evaporate or drain this moisture away safely.

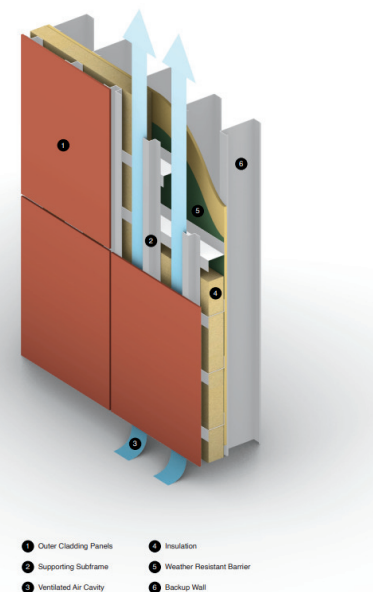
The concept of the 4 D's of weather tightness is a simple way of explaining a ventilated facade.

- **Deflection:** Proper detailing of the facade and flashings for deflection, with the aim of keeping water out.
- **Drainage:** Allowance for clear paths for the water to drain outside, should water get in.
- **Drying:** Adequate provision for ventilation and vapor diffusion within the cladding cavity to eliminate remaining water.
- **Durable:** Use of components with adequate durability appropriate to the project location.

## High-Density Fiber Cement Rainscreen Systems

- Primarily installed on sophisticated metal substructures.
- Features open-joint, back ventilated design for a cleaner look, no trim pieces or battens or sealant lines between the panels.
- Panels can be as large as 10'x4', offering more flexibility in the design of fabricated final panels.

To learn more about ventilated rainscreen systems and their benefits, visit [equitone.com/en-us/](https://equitone.com/en-us/) or scan the QR code.







Utile Design - Boston, MA



# Five reasons to choose EQUITONE

Discover why EQUITONE is your premier partner for innovative ventilated facade projects. From the material's durability to unmatched design flexibility, expert services, sustainability efforts, and safety, each aspect reflects a commitment to responsible excellence, transforming your architectural aspirations into enduring realities.



ARC Cambridge - Providence, RI





## Durability

Designed for strength and reliability, EQUITONE panels, seamlessly installed on the facade using a rear-ventilated rainscreen system, offer:

- Over 50 years of longevity\*
- Anti-graffiti protection\*\*
- No requirement for repainting
- Resistance to extreme temperatures and frost
- Exceptional water resistance
- Chemical resistance
- Resilience against various living organisms
- ASTM E1186 Minimum Grade III strength classification
- EN 12467 Minimum Grade IV strength classification



## Sustainability

EQUITONE takes the lead in environmental excellence, offering a sustainable framework in our category that will contribute to the success of your future projects:



- Cradle to Cradle Certified® Bronze\*\*\*
- Low material usage/m2
- Modular design
- Lightweight construction
- Ease of disassembly
- Low maintenance
- No harmful gas emissions
- No flame retardants, halogenated or otherwise



## Design flexibility

Empower your design journey with EQUITONE's flexible solutions:

- Customizable sizes and shapes
- Perforation, milling, and printing options
- Accommodating special applications, including curved walls, roofs, interiors, and sunshades
- Vertical, horizontal, or angled layouts
- Random or staggered patterns



## Expert services

Ease through daily challenges at every stage of your architectural project with the expert services offered by EQUITONE:

- Over 120 years of experience worldwide
- Expert consultations available at every project stage
- Access to online technical resources
- BIM object support
- Regular workshops with architects to enhance your experience



## Fire Safety

We prioritize safety with noncombustible materials that have been rigorously tested to local fire standards:

- ASTM E136 noncombustible rating
- ASTM E84 flame spread 0 and smoke development 5 ratings
- ULC S102 flame spread 0 and smoke development 5 ratings

\* Per independent environmental product declarations (EPD) and LCA lifecycle analysis.

\*\* Applicable to: [natural] PRO, [pictural] and [inspires]

\*\*\* Applicable to: [natural], [natural] PRO, [tectiva], [lunara], [linea], [pictural].

# Giving material a second life

## Our 2030 ambitions

At EQUITONE, we are committed to developing ways to reuse and recycle, ensuring they have a second life. But we're not stopping there. With your partnership, we aim to go even further—rethinking how our materials are designed, manufactured, and used to minimize resource consumption and eliminate waste. By prioritizing circular design principles, we are shaping a more sustainable future for the built environment, one façade at a time.

### Lighter impact materials

Minimizing their environmental footprint throughout their entire life cycle.

### Zero waste to landfill production

Keeping our materials in use and out of landfill.

### The circular potential of fiber cement cladding

Made of water, Portland cement, cellulose and natural minerals, our materials contribute to the circular construction industry.



Reusable



Low maintenance



Lightweight



Low material usage/m<sup>2</sup>



Durable (+50 years)\*



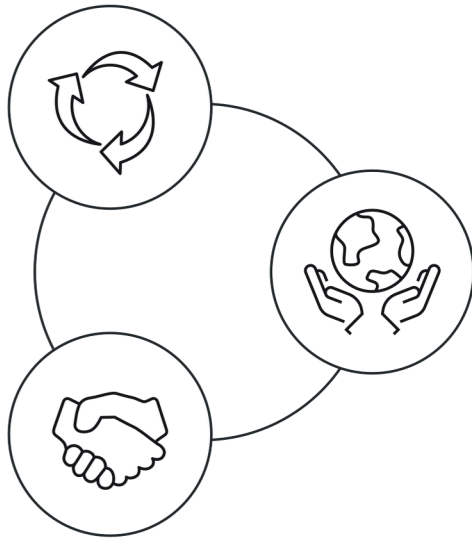
Modular

\*Based on EPD calculations



### **Our 3 areas of focus:**

How we want to go from long life and lightweight to light impact and circular by design.



#### **Circular design**

Designing our materials in modular or mechanical systems that are easy to dismantle, repair and rebuild.

#### **Light-impact construction**

Reducing our footprint across the value chain to create materials that are built to be light-impact.

#### **Radical collaboration for lasting change**

Breaking down industry silos to eliminate the total footprint of our materials – not just in production but throughout their entire life cycle.



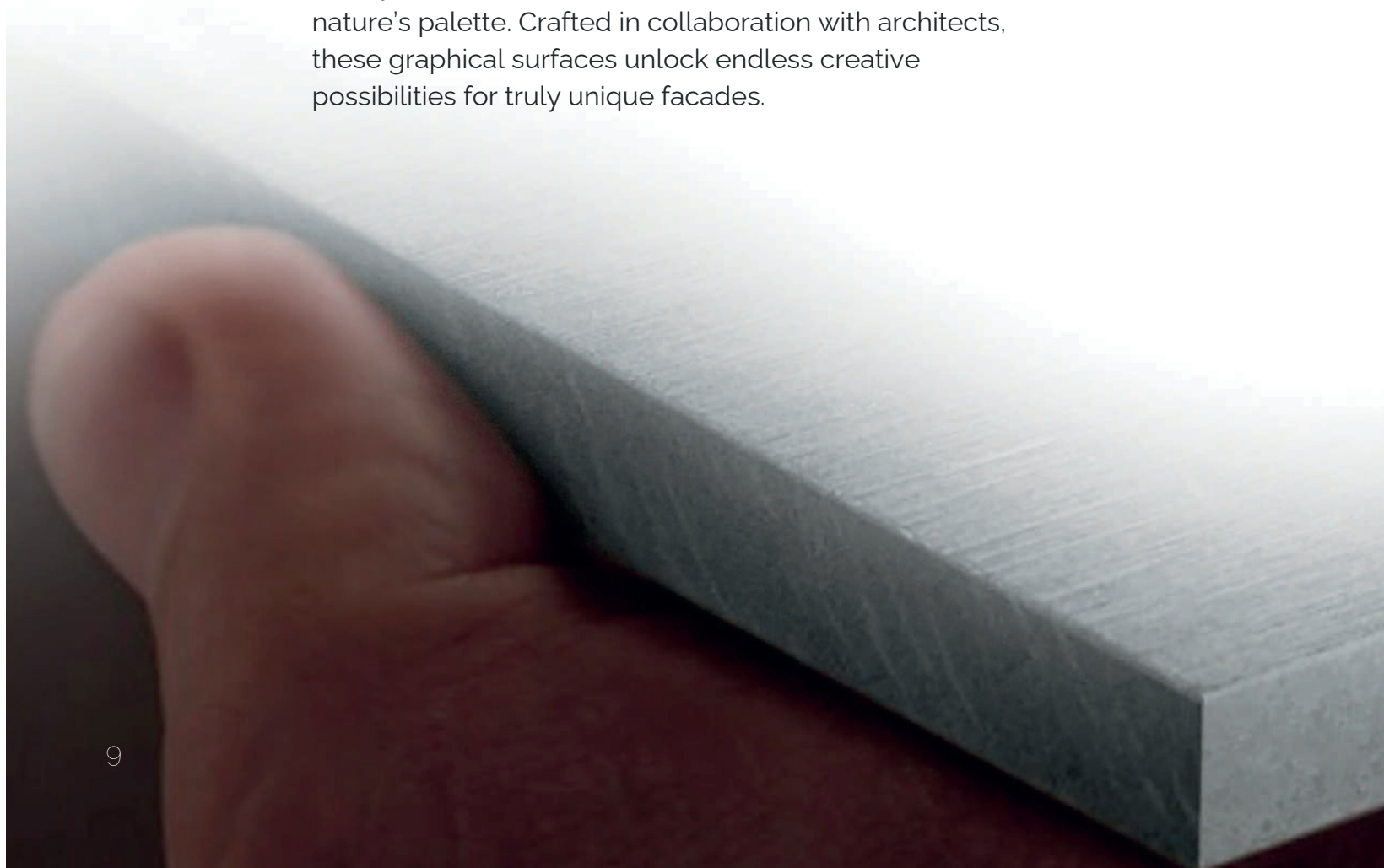
# Empowering your creativity

From the material's rawest expression to your own inspiration, your only limit is your imagination.

The story begins with the grey and subtle authenticity of two fiber cement materials, [natural] and [tectiva]. It continues with progressive degrees of mechanical surface modifications in [lunara] and [linea]. (The Minerals)

Next, [pictura] brings a range of colors to your facade designs (The Colorfuls).

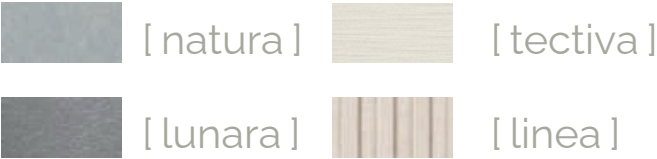
Finally, [inspires] (The Graphicals), captures the essence of nature's palette. Crafted in collaboration with architects, these graphical surfaces unlock endless creative possibilities for truly unique facades.





**The Minerals**

Embrace natural and authentic elegance, explore our earthly mineral-tone panels



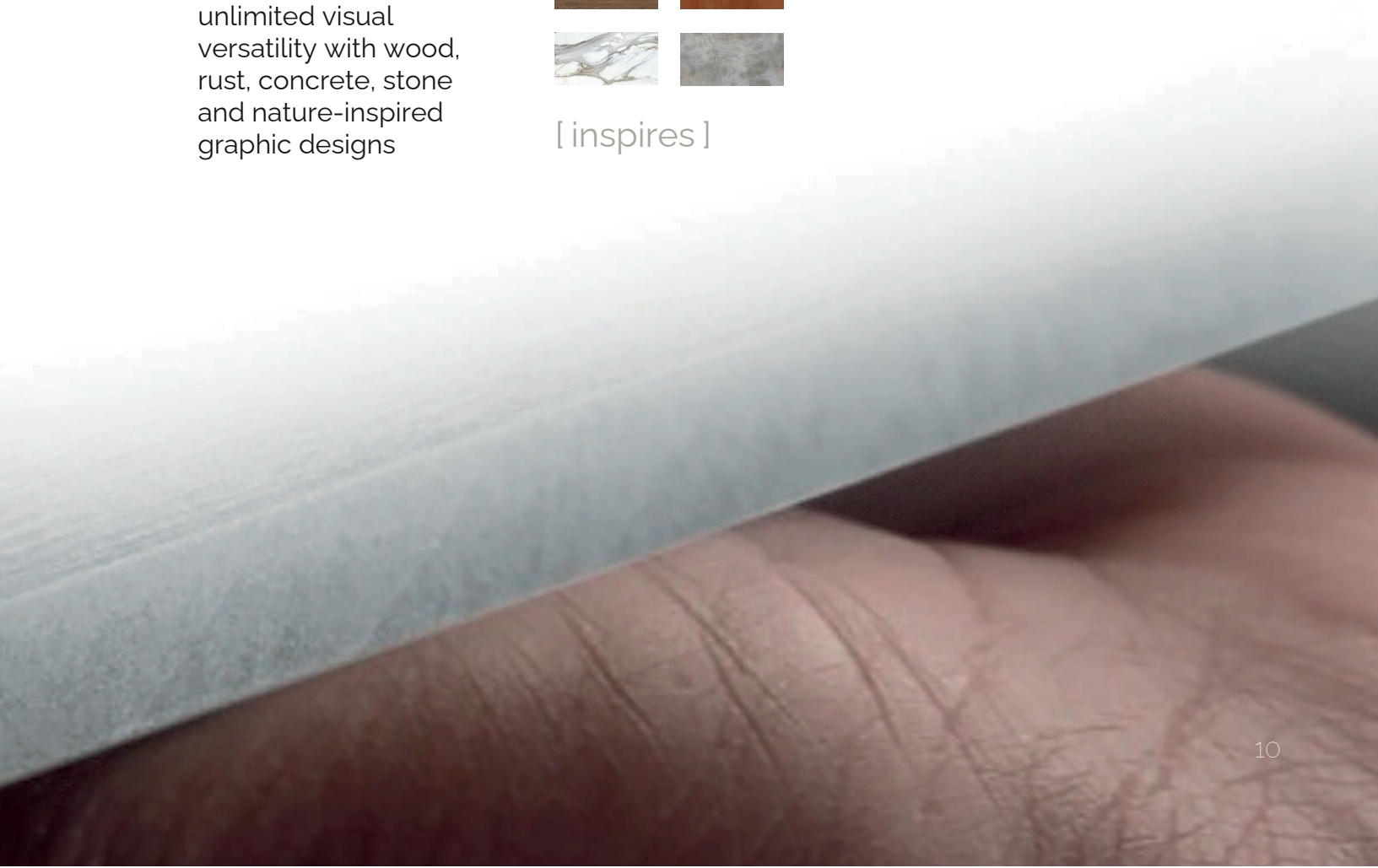
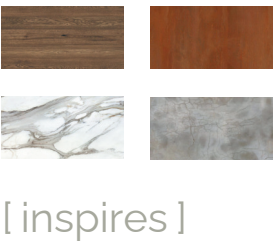
**The Colorfuls**

Awaken your facade: discover our vibrant palette for a colorful and original aesthetic



**The Graphicals**

Dive into a world of unlimited visual versatility with wood, rust, concrete, stone and nature-inspired graphic designs



# The Minerals







NAC - Snoqualmie, WA



# EQUITONE [natura]

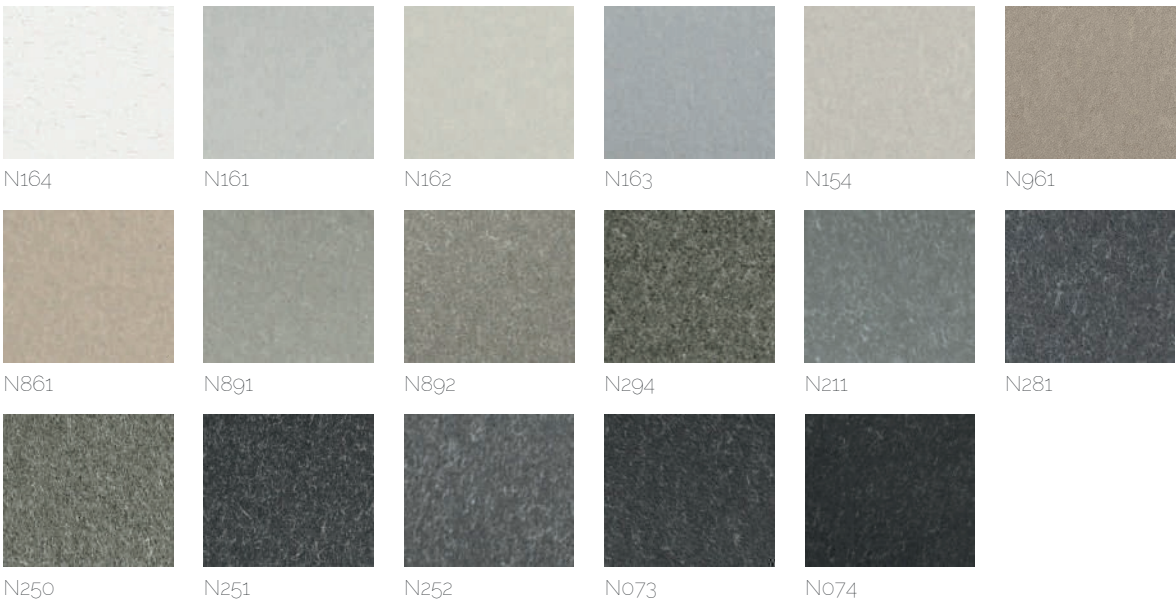
**EQUITONE [natura]** is a through-colored facade material with a colored semi-transparent acrylic finish on top. It has a sleek and refined surface with visible fibers randomly distributed throughout. Optional Natura PRO finish is also available with a graffiti protection and is scratch-resistant.

**Touch:** Matte, silk, smooth surface finish  
**Visual:** Fibers distributed randomly, refined, precious

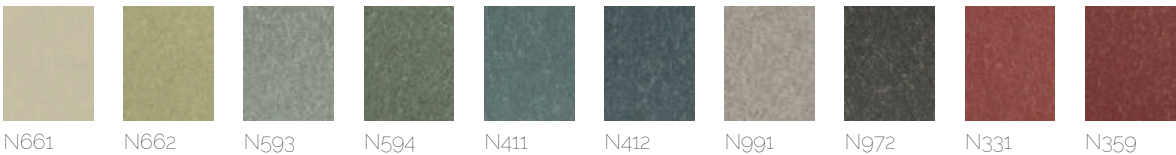
Thickness	Width	Lengths
8 or 12 mm	1,250 mm	2,500 or 3,100 mm
5/16 in or 1/2 in	49 in	98 or 122 in

## AVAILABLE IN 27 COLORS

THROUGH-COLORED



## SPECIAL COLORS



Other colors available on request, subject to minimum order quantities.





Architectural Resources Cambridge - Andover, MA





HOK, Ferraro Choi - Oahu, HI





Ewing Cole - Hanscom, MA





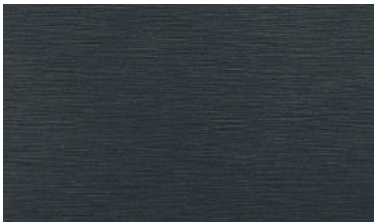
# EQUITONE [tectiva]

**EQUITONE [tectiva]** is a through-colored facade material, characterized by a sanded surface. Every panel is unique, strongly expressing the raw texture of the core fiber cement material.

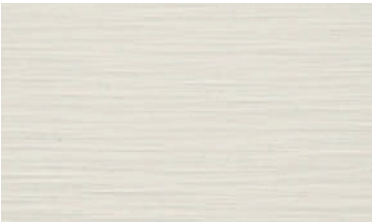
**Touch:** Fine sanding lines  
**Visual:** Dry, lively, dynamic, with naturally occurring hues within the material

Thickness	Width	Lengths
8 mm 5/16 in	1,220 mm 48 in	2,500 or 3,050 mm 98 or 120 in

AVAILABLE IN 9 COLORS



TE85



TE90



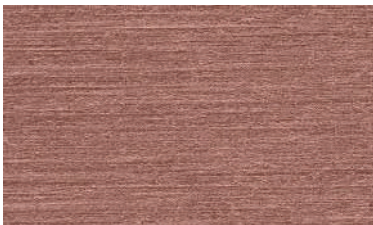
TE30



TE20



TE00



TE40



TE15



TE10



TE60





Andrea Steele Architecture - New York City, NY





Weber Thompson - Seattle, WA





Canerday, Belfsky + Arroyo - Tampa, FL



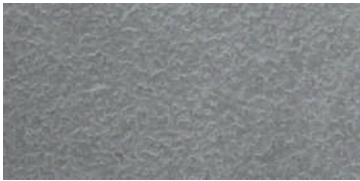
# EQUITONE [lunara]

**EQUITONE [lunara]** is a through-colored fiber cement panel with a surface resembling a lunar landscape. Each panel is unique in terms of its color, texture and surface, with a pattern that is not repeated.

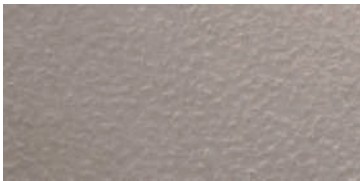
**Touch:** Rough, unpolished fiber cement surface with delicate linen touch  
**Visual:** Expressive, natural, unique

Thickness	Width	Lengths
8 to 10 mm	1,220 mm	2,500 or 3,050 mm
5/16 in to 3/8 in	48 in	98 in or 120 in

**AVAILABLE IN 2 COLORS:**

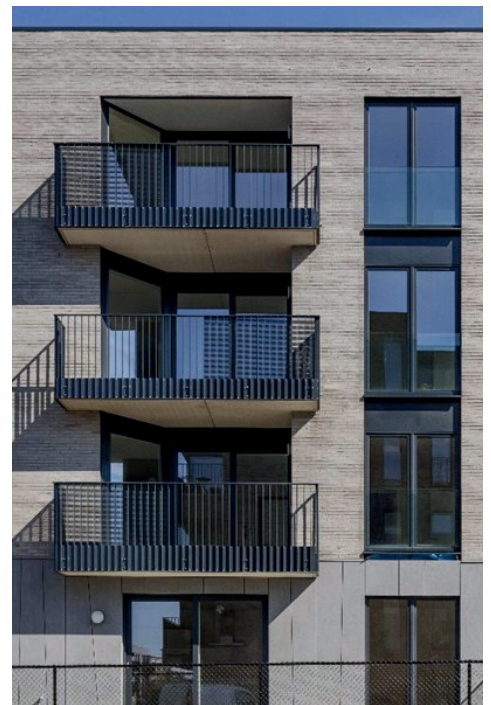
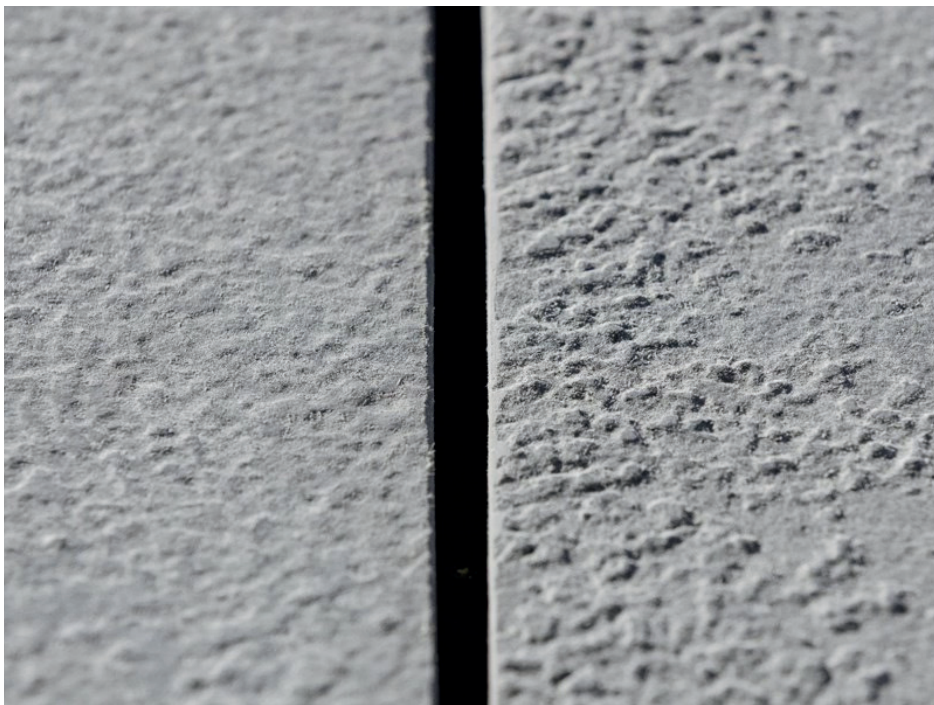


LA20



LA60





Urban Nation Architects - Wemmel, Belgium





Kirstine Roepstorff - Fredericia, Denmark





TSPC Ltd. with Mihály Kádár and Szilvia Könözszi a - Budapest, Hungary





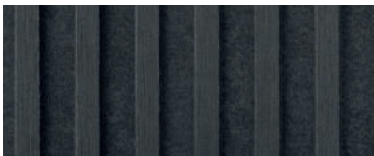
# EQUITONE [linea]

**EQUITONE [linea]** is a unique 3D shaped, through-colored facade material that plays with light and shadow. It displays a linear texture that highlights the raw inner texture of the core fiber cement material.

**Touch:** Structured, relief, depth  
**Visual:** Different, playful, changes depending on the point of view

Thickness	Width 1	Lengths
8 mm to 10 mm	1,220 mm	2,500 or 3,050 mm
5/16 in to 3/8 in	48 in	98 in or 120 in

AVAILABLE IN 9 COLORS:



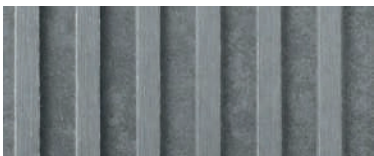
LT85



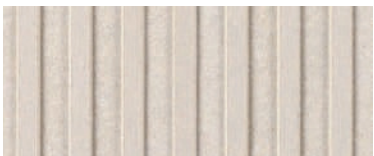
LT90



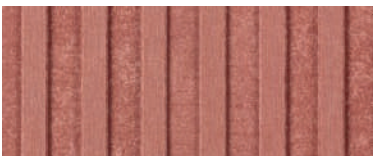
LT30



LT20



LT00



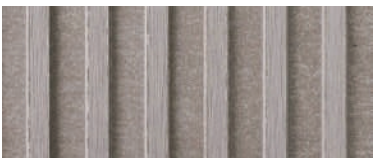
LT40



LT15

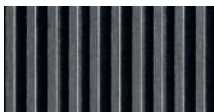


LT10

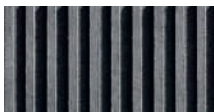


LT60

LIGHT AND SHADOW



8h00



9h00



10h00

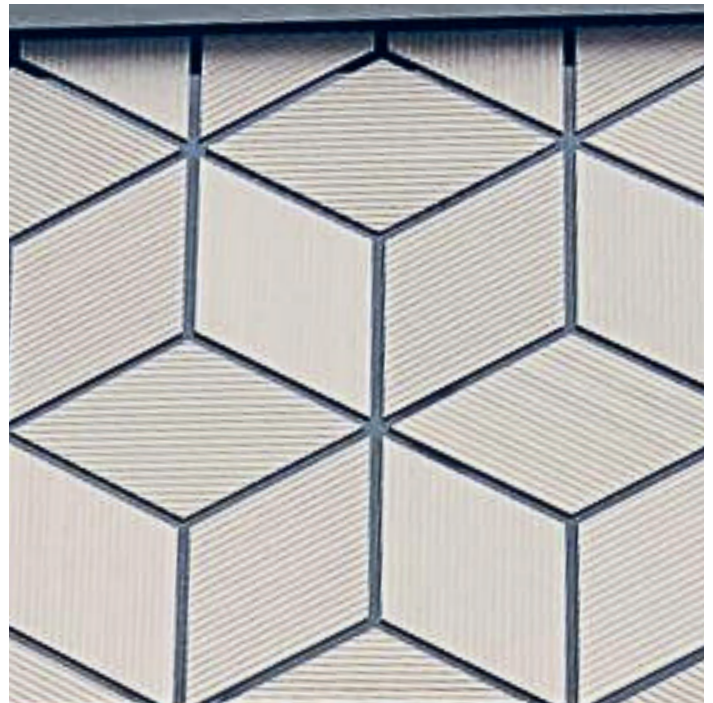


11h00



12h00



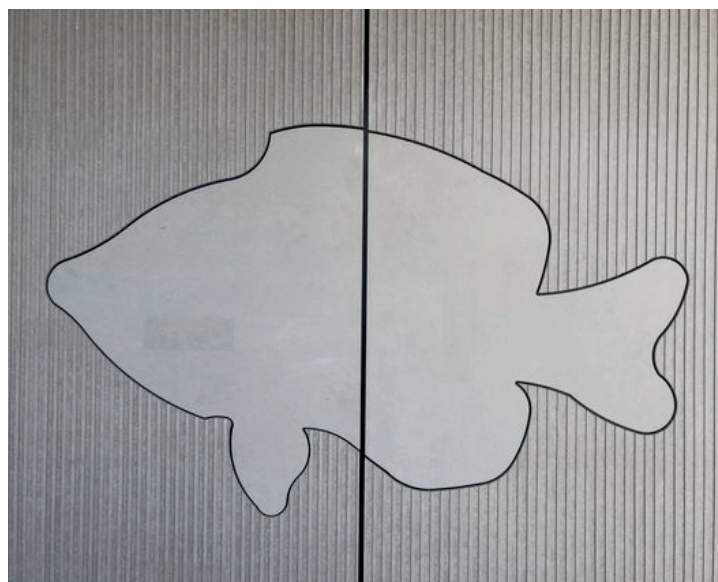
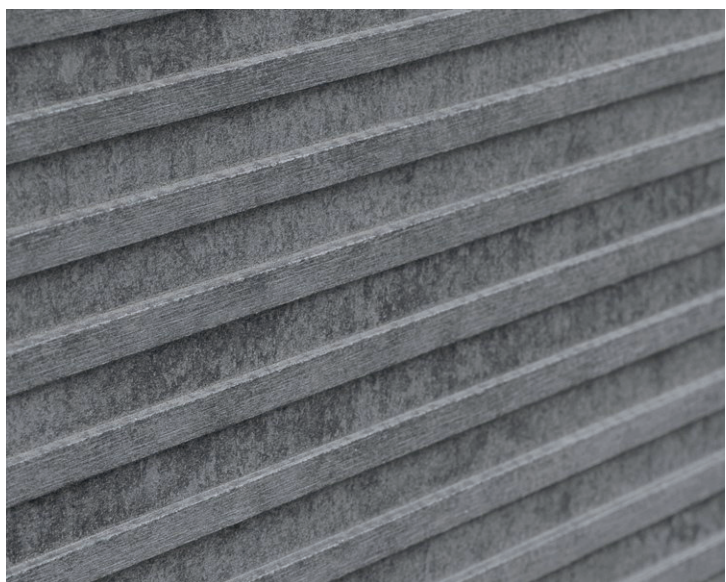


B+ Architects - Manhasset, NY





ASA Architects - El Paso, TX



Perkins&Will - San Francisco, CA





EHDD Architecture - Yreka, CA



# The Colorfuls







ÁRTER Architects - Perwez, Belgium



# EQUITONE [pictura]

**EQUITONE [pictura]** is a fiber cement facade material with an ultra-matte architectural finish and anti-graffiti properties. Thousands of custom-matched matte project colors are available on request.

**Touch:** Smooth, matte, no visible fibers  
**Visual:** Classic, brings colorful accents into the facade

Thickness	Width	Lengths
8 mm or 12 mm 5/16 in or 1/2 in	1,250 mm 49 in	2,500 or 3,050 mm 98 in or 122 in

**AVAILABLE IN 20 STANDARD COLORS:**

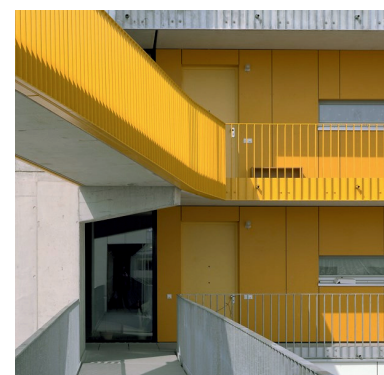
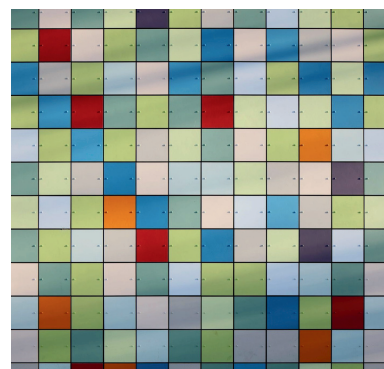
PW141	PW841	PG542	PG642	PG641
PG243	PG843	PG546	PG545	PG544
PG241	PG844	PG444	PG443	PG442
PA041	PA944	PG342	PG341	PG742

Other colours on request, subject to minimum order quantities.





Studio G Architects - Hyde Park, MA  
Doban Architecture - Brooklyn, NY



zt-raum Büro für Architektur - Hamberg, Germany  
Bogevichs Buero Architects - Munich, Germany





Perkins Eastman - Visalia, CA





Doban Architecture - Brooklyn, NY



# The Graphicals







Woods Bagot - Perth, Australia





# EQUITONE [inspires]

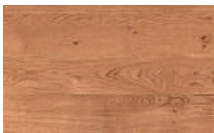
**EQUITONE [inspires]** is a high-density fiber cement panel with a digital printed surface covered with a UV protective coating. This material offers a durable, dirt-resistant finishing with high abrasion resistance and a permanent anti-graffiti surface.

Recreate the textures and colors of the natural world with a collection inspired by nature's palette.

**Touch:** smooth, hard, matt.  
**Visual:** modern, elegant, with expressive effect.

Thickness	Width	Lengths
8 mm	1,250 mm	3,100 mm or 2,500 mm
5/16 in	49 in	98 in or 122 in

[inspires] is available in 4 standard decors with the expressive surfaces (Wood, Rust, Stone and Concrete) and artistic surfaces with 5 decors (Coral, Leaves, Sine Wave and Carved Wood).



Wood



Rust



Stone



Concrete



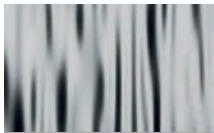
Coral



Coral



Leaves



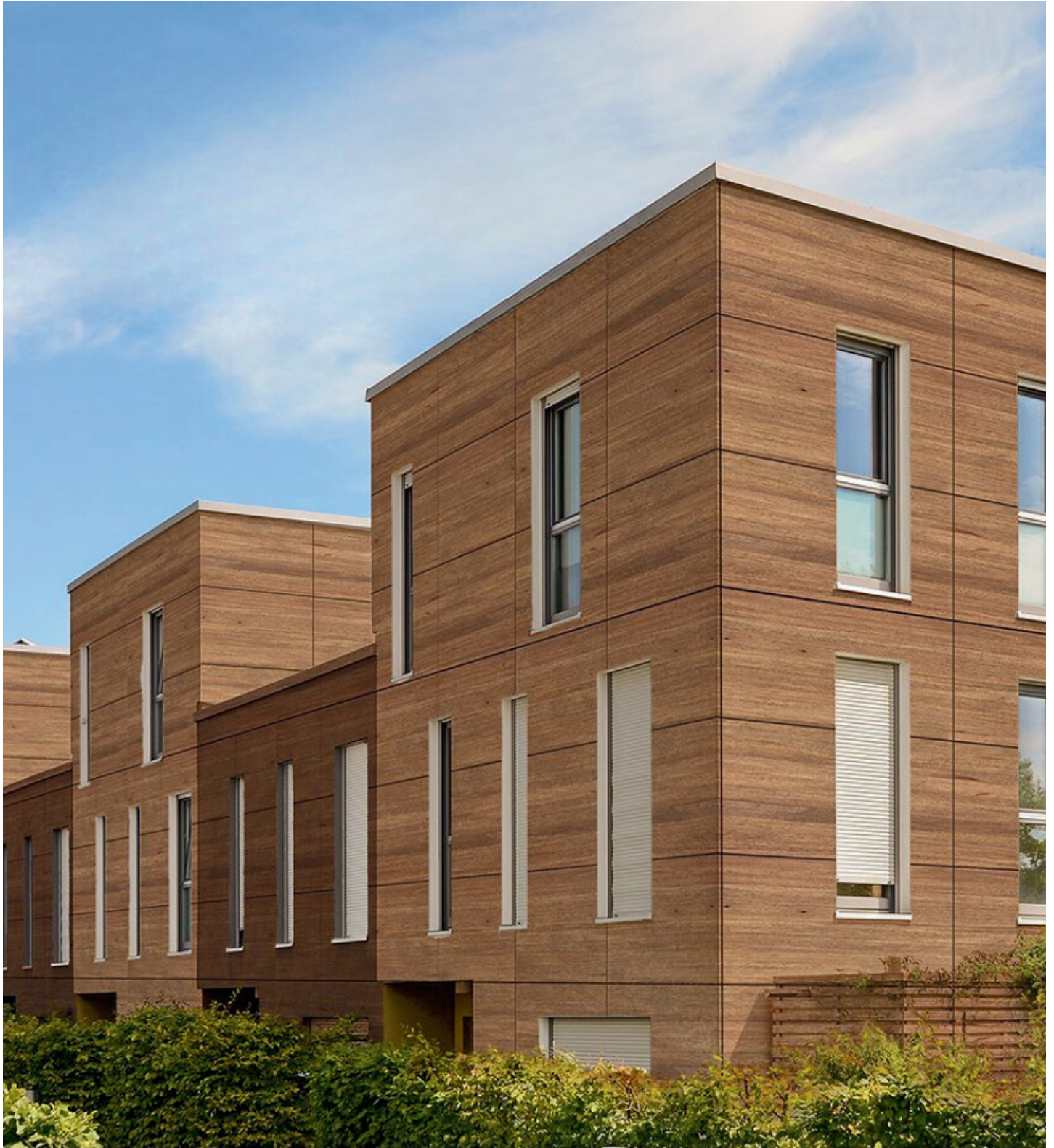
Sine Wave



Carved Wood

Order a sample







# EQUITONE [inspires]

## Wood Effect

AVAILABLE IN 8 WOOD DECORS WITH ANTI-GRAFFITI SURFACE:

Thickness	Width	Lengths
8 mm	1,250 mm	3,100 mm or 2,500 mm
5/16 in	49 in	98 in or 122 in



FCW 157 C  
Natural Alder



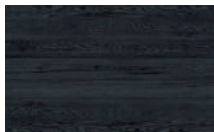
FCW 157  
Classic oak



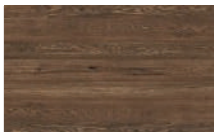
FCW 156  
Rustic oak



FCW 127  
White oak



FCW 125 B  
Carbon oak



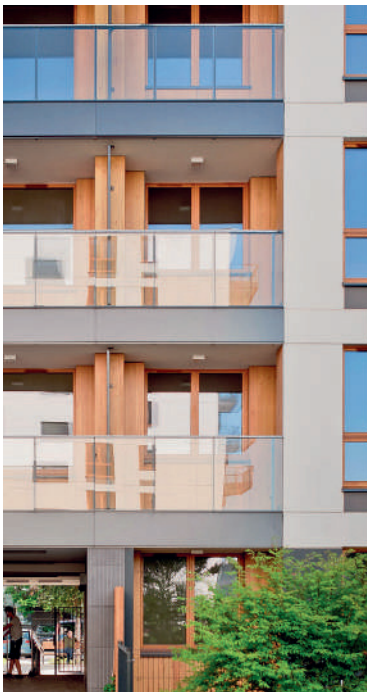
FCW 125  
Old oak



FCW 121 IB  
Light walnut



FCW 121  
American walnut



# Rust Effect

AVAILABLE IN 4 RUST DECORS WITH ANTI-GRAFFITI SURFACE:

Thickness	Width	Lengths
8 mm 5/16 in	1,250 mm 49 in	3,100 mm or 2,500 mm 98 in or 122 in



FCR 656  
Vertical rust



FCR 535  
Thick rust



FCR 484  
Wild rust



FCR 454  
Modern rust





# EQUITONE [inspires]

## Stone Effect

AVAILABLE IN 8 STONE DECORS WITH ANTI-GRAFFITI SURFACE:

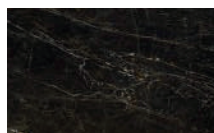
Thickness	Width	Lengths
8 mm 5/16 in	1,250 mm 49 in	3,100 mm or 2,500 mm 98 in or 122 in



FCS 548  
Black marble



FCS 547  
Cracked marble



FCS 530  
Black stone



FCS 075  
Silver calacatta



FCS 074  
Gold calacatta



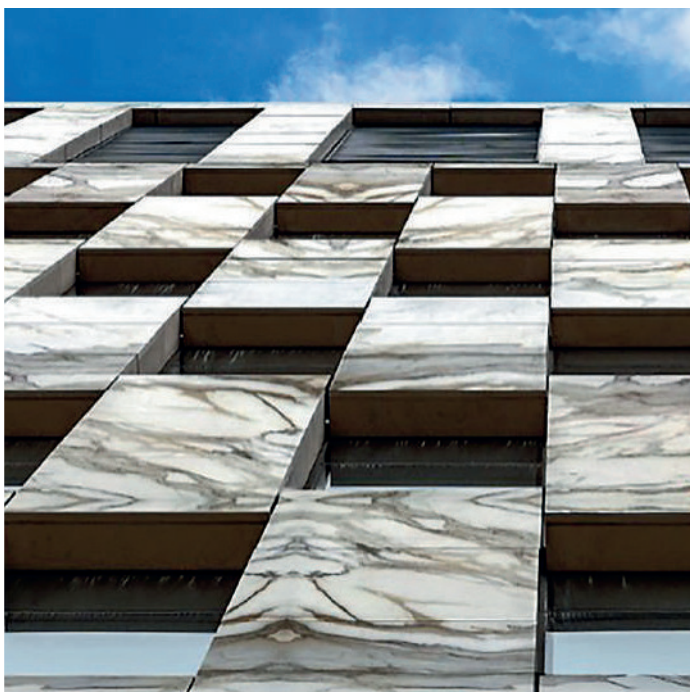
FCS 059  
White calacatta



FCS 006  
Beige travertine



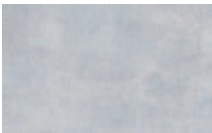
FCS 004  
Amber travertine



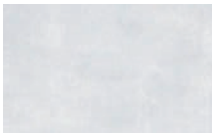
# Concrete Effect

AVAILABLE IN 10 CONCRETE DECORS WITH ANTI-GRAFFITI SURFACE:

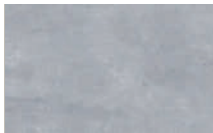
Thickness	Width	Lengths
8 mm	1,250 mm	3,100 mm or 2,500 mm
5/16 in	49 in	98 in or 122 in



FCC 426 B  
Warm concrete



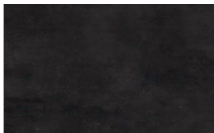
FCC 426  
Bright concrete



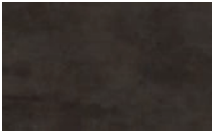
FCC 320  
Grey concrete



FCC 020 A  
Grey rust



FCC 318 A  
Industrial black



FCC 318  
Industrial brown



FCC 292  
Silver concrete



FCC 020 B  
Dark rust



FCC 437  
Wild plaster



FCC 025  
Cracked plaster



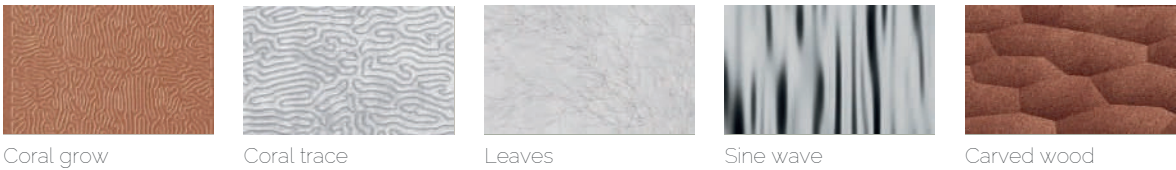


# EQUITONE [inspires]

Artistic surfaces created by architects for architects and inspired by nature. The five examples below illustrate the infinite possibilities offered by EQUITONE [inspires].

Thickness	Width	Lengths
8 mm	1, 250 mm	3,100 mm or 2, 500 mm
5/16 in	49 in	98 in or 122 in

## 5 designs







# Custom Solutions

We are proud to introduce EQUITONE Custom Solutions, our new innovation in fiber cement panels.

With advanced digital printing technology, these panels can be customized with any image or pattern, offering unlimited design possibilities for unique architectural expressions. Whether you're envisioning bold graphics, natural textures, or intricate details, our team is here to help bring your vision to life.

Contact your local EQUITONE representative for more information—we're ready to provide personalized guidance and support in developing your custom design.



Szlachcic Architects - Łódź, Poland

Unlimited Personalization







# EQUITONE

by etex



Cannon Design - Pasadena, CA  
Atkin Olshin Schade Architects - Reading, PA

## USA/Canada

1731 Fred Lawson Dr. Maryville TN, 37801  
Tel: +1 865 268 0654  
E-mail: [info.usa@equitone.com](mailto:info.usa@equitone.com)  
[www.equitone.com/en-us/](http://www.equitone.com/en-us/)  
[www.equitone.com/en-ca/](http://www.equitone.com/en-ca/)

Follow us:

EQUITONE-BRO-catalog-en-US-CA-202601

Disclaimer The information in this document is correct at the time of issuing. However, due to our committed program of continuous material and system development, we reserve the right to amend or alter the information contained therein without prior notice. Please visit [www.equitone.com](http://www.equitone.com) to ensure you have the most current version. All figures contained in this document are illustrations and should not be used as construction drawings. This information is supplied in good faith and no liability can be accepted for any loss or damage resulting from its use. This document is protected by international copyright laws. Reproduction and distribution in whole or in part without prior written permission is strictly prohibited. EQUITONE and logos are trademarks of Etex NV or an affiliate thereof. Any use without authorization is strictly prohibited and may violate trademark laws.