



# COLOURS & TEXTURES



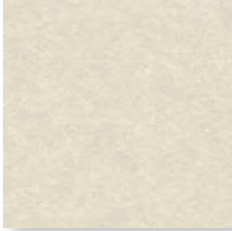
## NATURA

- Semi transparent coating (N)

## NATURA PRO

- Semi transparent coating with additional anti-scratch pro coating (NU)

### THROUGH-COLOURED FIBRE CEMENT (surface + edges same colour)



N 154 + NU 154 Cream White \*



N 251 + NU 251 Anthracite



N 250 + NU 250 Natural Grey



N 359 + NU 359 Rubin Red \*

### COATING ON NATURAL GREY FIBRE CEMENT (surface coating only + not edges)



N 891 + NU 891 Beige



N 892 Beige



N 291 Grey



N 292 + NU 292 Grey



N 293 Grey



N 191 + NU 191 White



N 591 Green



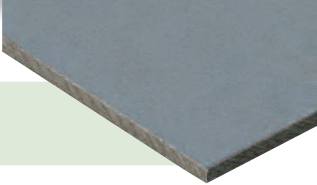
N 491 Blue



N 592 Green

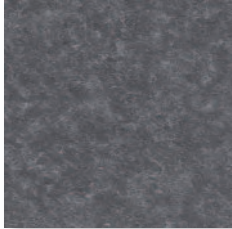
THICKNESS		UNTRIMMED (mm)		TRIMMED (mm)	
5 mm*	width	1280	1280	1250	1250
	length	2530	3130	2500	3100
8 mm	width	1280	1280	1250	1250
	length	2530	3130	2500	3100
12 mm	width	1280	1280	1250	1250
	length	2530	3130	2500	3100

\* 5 mm not available in N/NU 154 Cream White and N/NU 359 Rubin Red

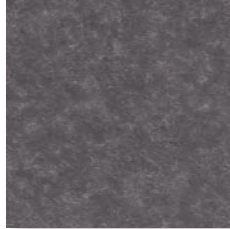


NATURA  
NATURA PRO

COATING ON ANTHRACITE FIBRE CEMENT (surface coating only + not edges)



N 271 Grey



N 281 Grey



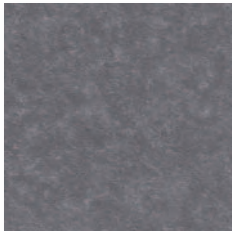
N 971 Brown



N 571 Green



N 581 Green



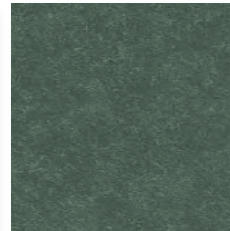
N 272 Grey



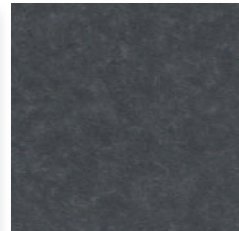
N 282 + NU 282 Grey



N 972 Brown



N 572 + NU 572 Green



N 582 Green



N 273 Grey



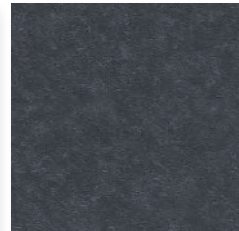
N 283 Grey



N 973 + NU 973 Brown



N 573 Green



N 583 Green



N 371 Red



N 471 Blue



N 071 Black



N 372 Red



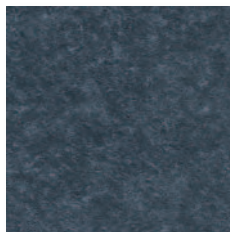
N 472 Blue



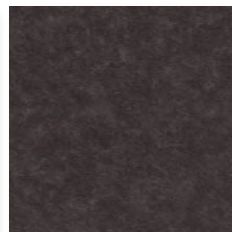
N 072 Black



N 373 + NU 373 Red



N 473 + NU 473 Blue

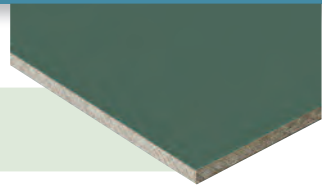


N 073 + NU 073 Black

**ADVICE FOR ALL COLOURS**  
The colour chart gives an impression of the colours which are available. Reproduction of the exact colour is restricted by the printing process. For an exact colour match, samples are available on request.

PICTURA

- smooth, matt and even surface
- anti-scratch top coating



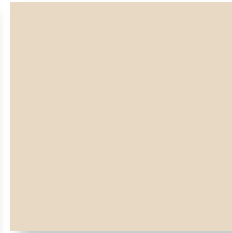
PU 941 Brown



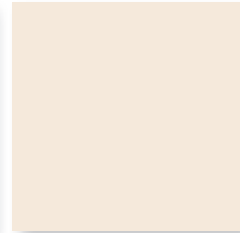
PU 543 Green



PU 943 Brown



PU 842 Beige



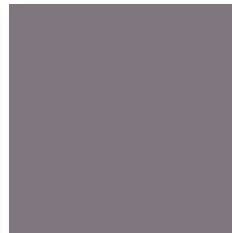
PU 841 Beige



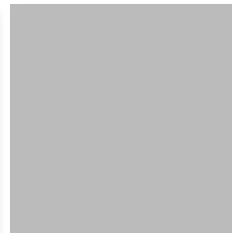
PU 041 Black



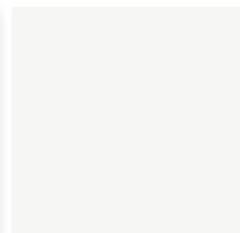
PU 241 Grey



PU 242 Grey



PU 243 Grey



PU 141 White



PU 341 Red



PU 541 Green



PU 441 Blue



PU 741 Orange



PU 542 Green

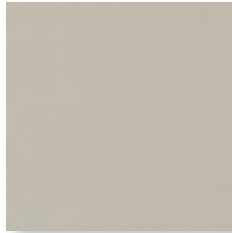
THICKNESS		UNTRIMMED (mm)		TRIMMED (mm)	
8 mm	width	1280	1280	1250	1250
	length	2530	3130	2500	3100
12 mm	width	1280	1280	1250	1250
	length	2530	3130	2500	3100

PICTURA 5 mm – GLASAL-T

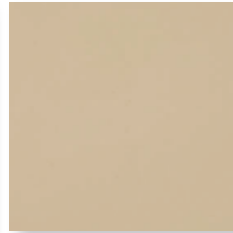
- smooth, matt and even surface
- anti-scratch top coating



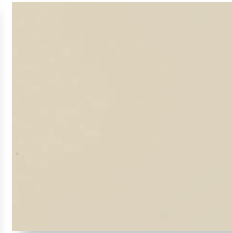
GT 532 Green



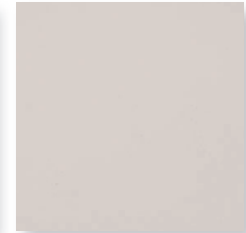
GT 531 Green



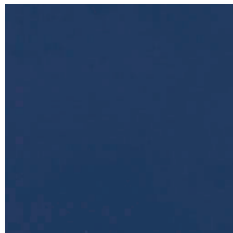
GT 833 Beige



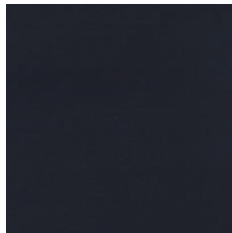
GT 832 Beige



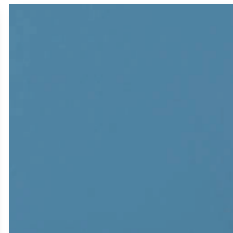
GT 831 Beige



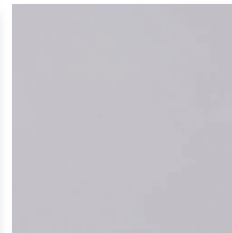
GT 433 Blue



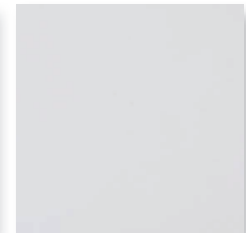
GT 432 Blue



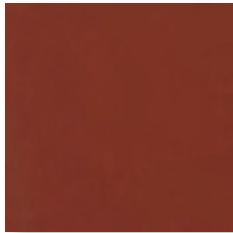
GT 431 Blue



GT 231 Grey



GT 131 White



GT 331 Red



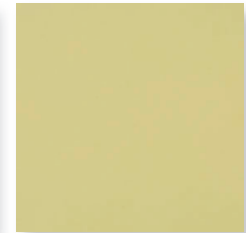
GT 731 Orange



GT 534 Green

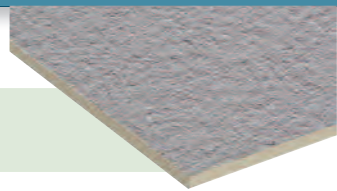


GT 533 Green



GT 631 Yellow

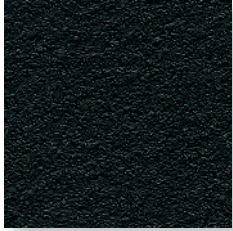
THICKNESS		UNTRIMMED (mm)		TRIMMED (mm)	
5 mm	width	-	-	1220	1220
	length	-	-	2500	3000



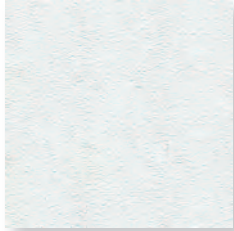
TEXTURA

- textured surface finish

TEXTURED SURFACE FINISH ON NATURAL GREY (TG) OR ANTHRACITE (TA) FIBRE CEMENT PANELS



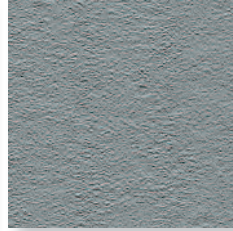
TA 001 Black



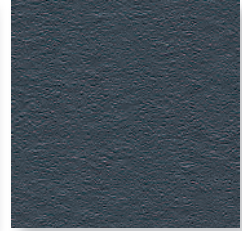
TG 102 White



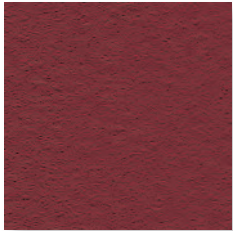
TG 205 Grey



TG 206 Grey



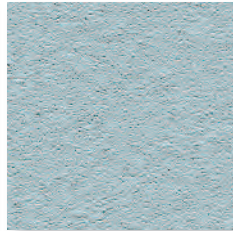
TA 207 Grey



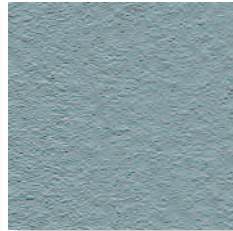
TA 304 Red



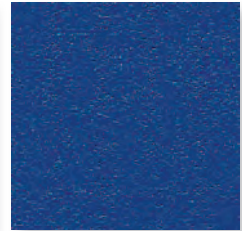
TA 305 Red



TG 403 Blue



TG 404 Blue



TA 405 Blue



TG 504 Green



TG 601 Yellow



TG 602 Yellow



TA 701 Orange



TG 803 Beige

THICKNESS		UNTRIMMED (mm)			TRIMMED (mm)		
8 mm	width	1280	1280	1530	1250	1250	1500
	length	2530	3130	3130	2500	3100	3100
12 mm	width	1280	1280	1530	1250	1250	1500
	length	2530	3130	3130	2500	3100	3100

**ETER-COLOR** - through-coloured (surface + edges same colour)  
 - natural hues in the sheet



E 00 Cream White



E 10 Light Beige



E 20 Dark Grey



E 30 Ochre-yellow



E 40 Terra-red



E 50 Jade Green

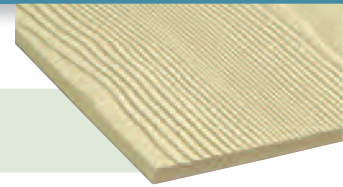


E 60 Light Brown



E 90 Super White

THICKNESS		UNTRIMMED (mm)		TRIMMED (mm)	
8 mm	width	1240	1240	1220	1220
	length	2520	3070	2500	3050

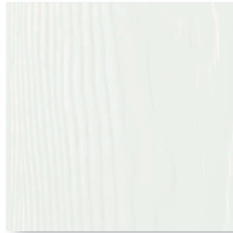


**CEDRAL**

- cedar wood texture (classic finish) or smooth surface (smooth finish)



C 00 Natural



C 01 White



C 02 Beige



C 03 Grey Brown



C 04 Dark Brown



C 05 Grey



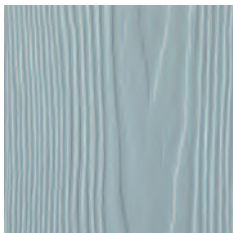
C 07 Cream White



C 08 Sand Yellow



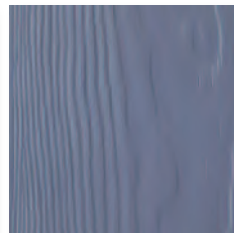
C 09 Ochre



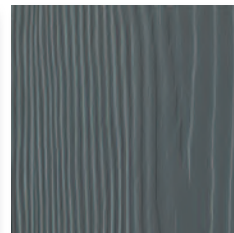
C 10 Blue Grey



C 11 Beige Yellow



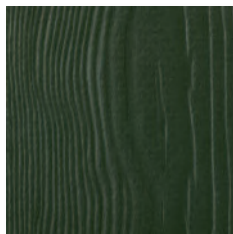
C 12 Lavender Blue



C 15 Dark Grey



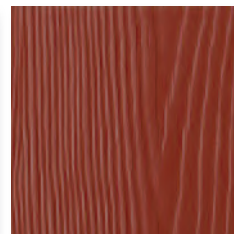
C 30 Brown



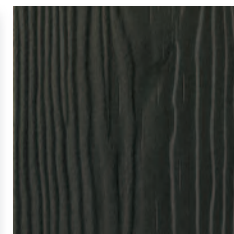
C 31 Green



C 32 Orange Brown

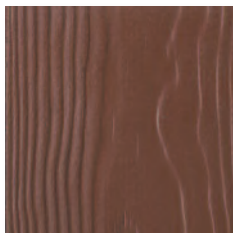


C 33 Red

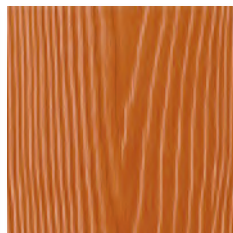


C 50 Black

**WOOD COLOURS**





CL 100 Walnut



CL 101 Cherry-wood

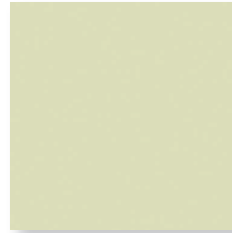
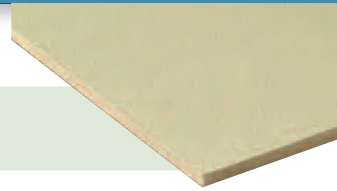


CL 102 Pear-wood

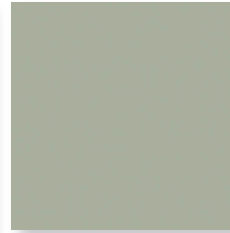
THICKNESS		CLASSIC FINISH (mm)	SMOOTH FINISH (mm)
10 mm	width	190	190
	length	3600	3000
			

OPERAL

- slightly structured surface  
- medium density board



OP 02 Beige



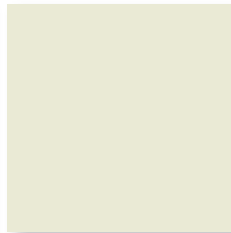
OP 03 Grey Brown



OP 04 Dark Brown



OP 05 Grey



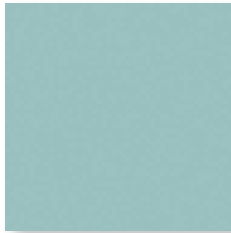
OP 07 Cream White



OP 08 Sand Yellow



OP 09 Ochre



OP 10 Grey Blue



OP 11 Beige Yellow



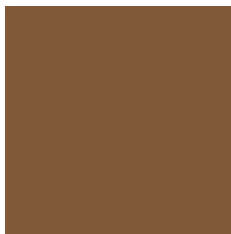
OP 12 Lavender Blue



OP 15 Dark Grey



OP 18 Slate Grey



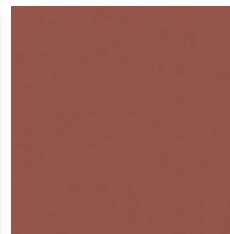
OP 30 Brown



OP 31 Green



OP 32 Orange Brown

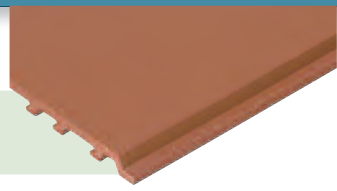


OP 33 Red



OP 50 Black

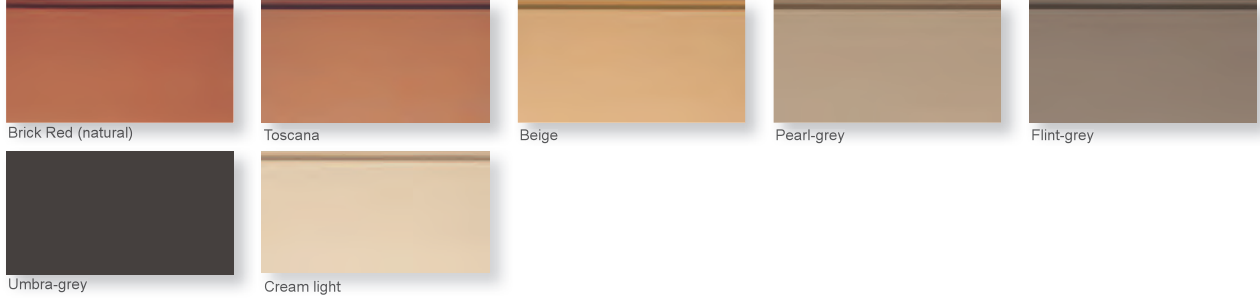
THICKNESS		trimmed sizes (mm)	
8 mm	width	1220	1220
	length	2500	3050



TONALITY®

- natural clay, smooth surface
- natural finish or finished surface with graffiti protection

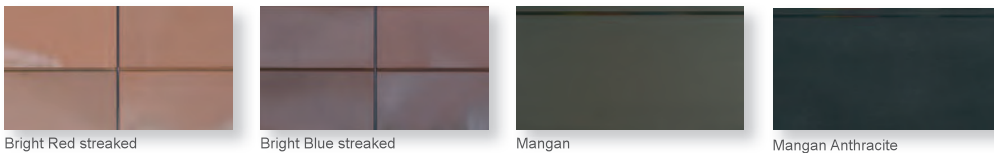
TONALITY® CLASSIC - NATURAL SURFACES



TONALITY® CLASSIC - FINISHED SURFACES WITH GRAFFITI PROTECTION



TONALITY® CLASSIC - SPECIAL PRODUCTION

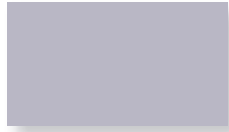


TONALITY® COLOR - NOT GLAZED

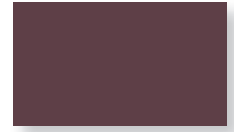


TONALITY®

TONALITY® COLOR - GLAZED



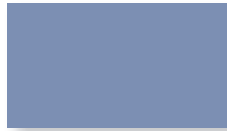
FA 1 glazed



FA 5 glazed



FC 1 glazed



FC 2 glazed



FC 3 glazed



FC 4 glazed



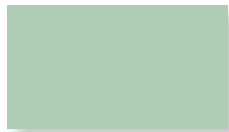
FE 1 glazed



FE 2 glazed



FE 3 glazed



FF 1 glazed



FF 2 glazed



FF 3 glazed



FH 1 glazed



FH 3 glazed



FH 4 glazed



FH 5 glazed



FK 1 glazed



FK 2 glazed



FK 3 glazed



FN 1 glazed



FN 3 glazed



FP 1 glazed



FP 2 glazed



FP 3 glazed



FS 1 glazed



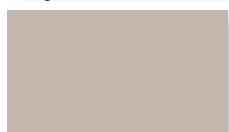
FS 3 glazed



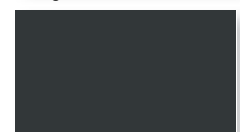
FS 4 glazed



FS 5 glazed



FW 1 glazed



FW 5 glazed

## DIVERSITY WITHIN BUILDING MATERIALS



RESIDENTIAL BUILDING, NEW ZEALAND (PHOTO EURO PANELS)

**Euro Panels** 

an **Etex** GROUP  company

Canadian Supplier:



**ENGINEERED  
ASSEMBLIES  
INC.**

**Engineered Assemblies Inc.**  
6535 Millcreek Drive, Unit 75  
Mississauga, Ontario L5N 2M2, Canada  
Toll-free: 1-866-591-7021  
E: [info@engineeredassemblies.com](mailto:info@engineeredassemblies.com)  
[www.engineeredassemblies.com](http://www.engineeredassemblies.com)

Technical status 03/2010

All notes, technical and graphic information correspond to the current state of the art and to our experience based on this. The installations described are examples and do not take in consideration the conditions particular to individual cases. The information given and the suitability of the materials for the proposed use must be checked by the purchaser in all cases. We (companies of the Etex Group) accept no liability. This also applies in respect of misprints and subsequent change of a technical nature.