

12 shades of blue in a seamless translucent polycarbonate façade enhance the signature appearance of this Olympic Venue.

**RICHMOND
OLYMPIC OVAL**
RICHMOND, BC

ARCHITECT
CANON DESIGN INC.

GENERAL CONTRACTOR
DOMINION FAIRMILE
CONSTRUCTION LTD.

INSTALLER
FLYNN CANADA LTD

OWNER
CITY OF RICHMOND
BRITISH COLUMBIA, CANADA

MANUFACTURER
CPI DAYLIGHTING, INC.



CPI DAYLIGHTING *solutions*

FLIGHT, FLOW AND FUSION

Three aesthetic concepts drove the design of the 512,000-sq.-ft. Richmond Olympic Oval, home to the Vancouver 2010 Olympics long track speed skating competition: *Flight, Flow and Fusion*.

Flight for the Great Blue Heron, the symbol of the City of Richmond, *Flow* for the neighboring Fraser River that empties out into the Strait of Juan de Fuca not far from the Oval's site and *Fusion* for the idea of an integrated design that poetically brings the site and its architecture together.

"The idea of Flow in the architecture of the Oval finds expression in the blue Quadwall cladding that wraps three sides of the structure," said architect James Wu, senior associate at Cannon Design Architecture, Vancouver. "The design attempts to show how the waters of the estuary transform from one shade to another gently and organically."

Specified for its ability to gradually combine 12 different shades of blue into a seamless, continuous facade, 63,000 sq. ft. of CPI's 2.75-in. Quadwall graces the Oval's South, East and West sloped-wall elevations.

"Its principal technical purpose was two-fold," said Wu. "First, [the Quadwall] had to filter and diminish the intensity of the sunlight from the south exposure, second it had to serve as the interior finish on the main activity level and had to be sufficiently robust to serve as a building code defined 'guard.' The nano-cell technology which provided excellent long-term impact resistance and high-quality light diffusion properties made Quadwall the ideal product."

Custom fabricated by CPI Daylighting and installed by Flynn Canada, Ltd., Toronto, the façade was independently performance tested for its static air and water infiltration, structural design load and seismic lateral racking. According to Flynn Canada's project manager Todd DeForest, the façade was "easy to install" and is expected to maintain color stability throughout its life span.

Contributing to the Oval's LEED Silver certification, the Quadwall brings daylight into the Oval's interior spaces and is the first application of its kind in the Vancouver area, ushering in an Olympic flavor since its September 2008 debut. So striking is the design that it earned a 2009 Award of Excellence for Innovation in Architecture by the Royal Architecture Institute of Canada.

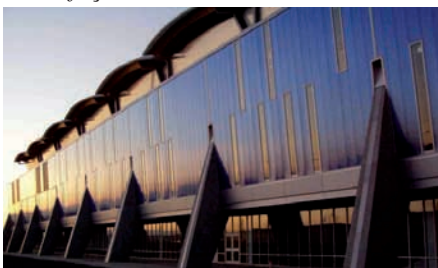
"The resulting aesthetic of the Quadwall assembly is very unique," said Wu. "The most dramatic is at night when the product is backlit. The translucent qualities are mesmerizing and when there is an adjacent point source of light, the effect is like having a bolt of lightning shimmer across the entire façade."



CPI translucent glazing is mesmerizing when backlit as evening falls.



An adjacent light source creates a "bolt of lightning" shimmering across the entire façade.

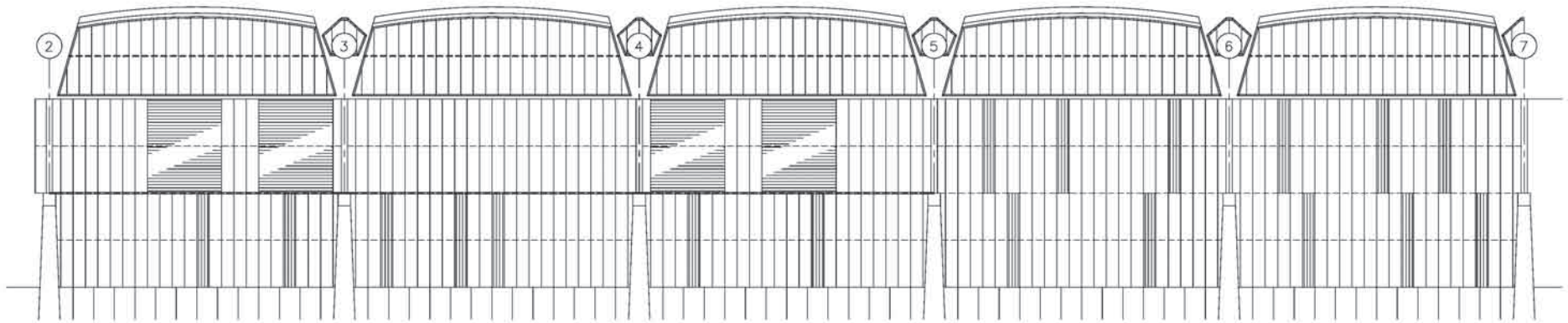


A seamless blue façade wraps three sides of the structure.

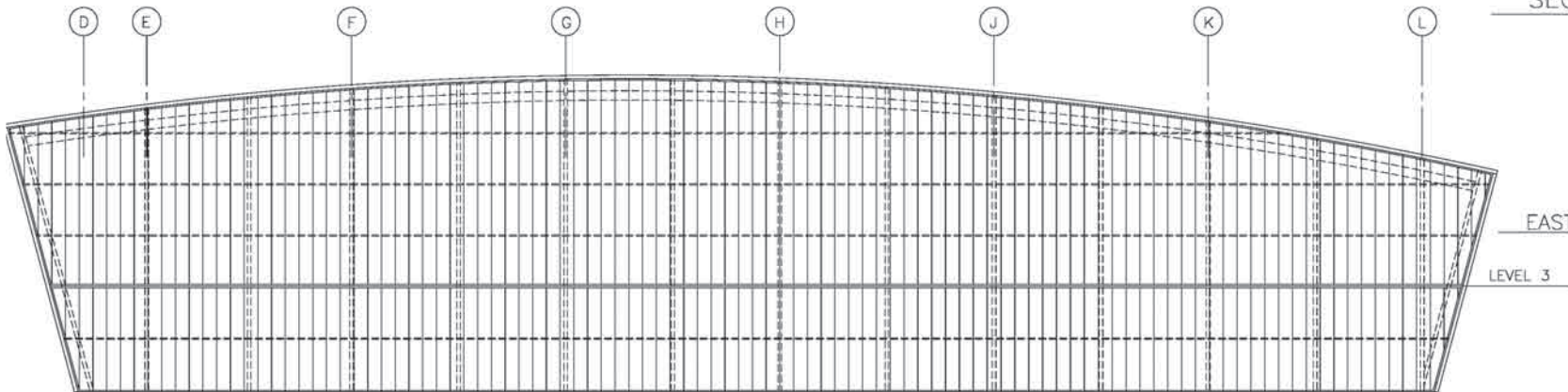
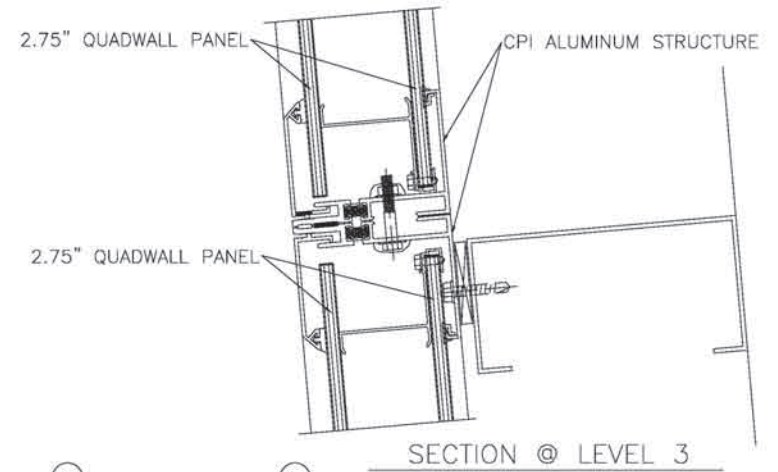
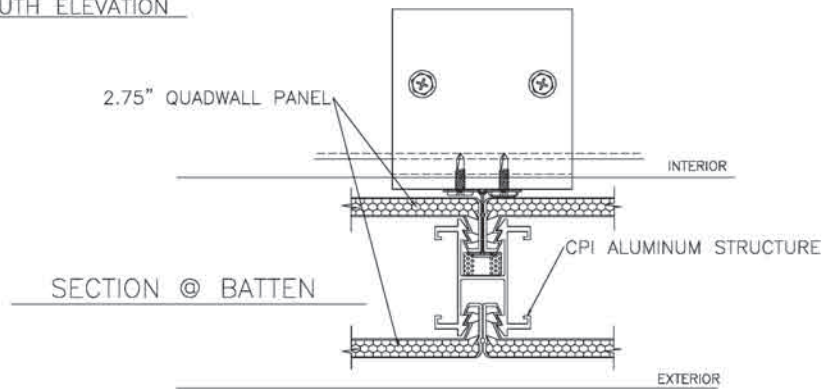
28662 N. BALLARD DRIVE LAKE FOREST, IL 60045
PHONE: (800) 759-6985 | FAX: (847) 816-0425
WWW.CPIDAYLIGHTING.COM



RICHMOND OLYMPIC OVAL



PARTIAL SOUTH ELEVATION



EAST ELEVATION

LEVEL 3

